



ALL ARE WELCOME

SUNDAY WORSHIP & HOLY COMMUNION:

Summer In-Person Worship & HC @ 8 & 9:30 a.m.
Our worship services will be livestreamed @ Facebook, and YouTube. Facebook stream also found on the home page of our website: www.mountolive-elca.net

OFFICE HOURS

Monday-Thursday 8 a.m. - 2 p.m.
Church Office: 262-363-8251
Email: mto@mountolive-elca.net

CHURCH STAFF

Pastor Steve Bogie
Office Phone: 262-363-8251
Cell Phone: 262-409-0743
Email: pastorsteve@mountolive-elca.net

Administrative Assistant
Debbie Wagner

Maintenance **Housekeeping**
David Gill Marie Sackett

Worship Accompanist/Praise Team Director
Deanna Kulow deanna.kulow@mountolive-elca.net

Sunday School Coordinator
Cindy Dobberke

AofB Coordinator
Cindy Dobberke 262-719-5711
cindy.dobberke@mountolive-elca.net

Prayer Chain
Betty Hinkelman 262-662-0205 or
Church office 262-363-8251

Websites
www.mountolive-elca.net
www.milwaukeeesynod.org
www.elca.org

**TWO SUMMER
WORSHIP SERVICES**



**MEMORIAL DAY thru
LABOR DAY WEEKENDS –
Sunday Worship & Holy Communion
8 a.m. – Worship & HC
And 9:30 a.m. – Worship & HC
(No Education Hour during summer)**

Our services will be livestreamed on our Facebook page, YouTube channel, and found on our webpage with a Facebook link. The livestreamed recordings will also be available for your viewing 24 hours a day, every day of the year.

**WHAT ARE
THE GRADS DOING?"**



We will be blessing our graduating students on **June 21st** as they move into the next phase of their life. If you have a family member of any age graduating at any time from the fall of 2025 through the spring of 2026 from high school, technical school, military training, college, or grad school, please inform the church office regarding their plans for the future. This includes those headed away or remaining in the Mukwonago area. Please help us celebrate our grads in a meaningful way!

Attention parents! No later than June 15th, please forward to the MTO office (or cindy.dobberke@mountolive-elca.net) 2-4 photos (at least one from the past and one current) of the graduate for a MTO slideshow. And if you have any questions, please contact the church office at 262-363-8251 or mto@mountolive-elca.net.

A MESSAGE FROM PASTOR STEVE

“Come to me, all you that are weary and are carrying heavy burdens, and I will give you rest. Take my yoke upon you, and learn from me; for I am gentle and humble in heart, and you will find rest for your souls. For my yoke is easy, and my burden is light.” Matthew 11:28-30 NRSV

Continuing Education & Growing in Partnership

The Gospel message from Matthew at the top of the page serves as a healing balm, meant to bring peace. I believe that God has placed this Gospel in the heart of humanity to provide guiding wisdom towards peace and love as we walk on our pilgrimage in this world together.

This August, I will be stepping away briefly for continuing education as part of my ongoing commitment to grow in knowledge, leadership, and service. I’ll be traveling to Galveston, where I will reconnect with my seminary roommate for a time of learning, reflection, and renewal.

This time away is an opportunity not only to deepen my own understanding, but find ways to better serve this congregation, community, and our shared mission together. My hope is to return with fresh perspective, renewed energy, and practical insights that will strengthen our life together as a congregation.

While I am away, I am deeply grateful for the strong leadership within our church. The gifts of this community are many, and it is a blessing to serve alongside people who care so faithfully for one another. Ministry will not pause while I am gone, it will continue through your presence, your relationships, and your willingness to step in and support one another.

Thank you in advance for your encouragement and prayers during this time.

At the same time, I’m excited to share an important opportunity for shared ministry. We are intentionally strengthening our relationship with Vernon Lutheran Church by developing a “buddy system” between our congregations. This is a way that we can live more fully into our identity as the body of Christ.

Through this intentional time, our congregations will have opportunities to be paired together to build relationships of mutual care, encouragement, and prayer.

In a world where it’s easy to feel isolated or disconnected, this is a simple but meaningful way to remind one another that we do not walk in faith alone. These connections may take many forms, sharing conversation, worship together, eating meals together, checking in during the week, supporting one another in times of need, or simply knowing there is someone else praying for you.

We believe this effort will not only deepen relationships between our congregations but also broaden our understanding of Lutheran community in Mukwonago, helping us see that the Church is larger than any one building or gathering. Together, we are practicing what it means to be connected, supportive, and rooted in Christ’s love.

This is an exciting step forward, and more details about how to participate in the buddy system will be shared soon. Thank you for being a community that values growth, connection, and shared ministry. It is a joy to walk this journey of faith with you.

Peace be with you always,
Steve Bogie *Pastor*



COFFEE WITH DUDES JUNE 16th

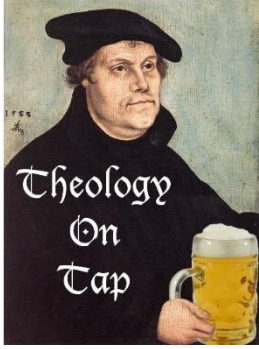
Looking for a relaxed midweek reset and some good conversation? *Coffee*

With Dudes is Pastor Steve’s monthly care team ministry for men, where guys can drop in, grab a cup of coffee, and connect in a laid-back setting.

Held every third Tuesday of the month from 10 a.m. to 12 p.m. at **Brew 52**, it’s an open time for conversation, encouragement, listening, and support—no agenda, no pressure, just real talk over coffee.

Whether you stay for 10 minutes or the full two hours, you’re welcome to come as you are and be part of a community that shows up for one another.

THEOLOGY ON TAP



The next Theology on Tap is on **Monday, June 1st, 6:30 p.m., at Badger Burger.** Come and enjoy a beer, glass of wine, or a cocktail as we gather in a casual, safe space to talk about life, our experiences, and the presence of God through it all.

Theology on Tap will be a great time to build friendships in a relaxed atmosphere. The atmosphere and an adult beverage will help us talk about anything the Holy Spirit brings to our hearts. Join us on the first Monday of each month at Badger Burger in Mukwonago. Theology on Tap is open to anyone over 21. Relax with friends while discussing your experience of life and God. I hope to see you at Theology on Tap soon.

Please let Debbie know in the office if you wish to attend. Peace be with you always, Steve Bogie, Pastor.



PRAISE BAND

Mount Olive is beginning an exciting new chapter in worship with the

launch of a praise band during the second service on the fourth Sunday of the month! At its heart, music and ministry are built on relationships and joy—creating music that connects us to one another and to God, inspiring people to engage their faith.

We invite you to support this new ministry—and if you feel called, to be part of it. Bring your gifts. Bring your voice. Let's grow something meaningful together in Jesus' name.

ALL IN RELATIONAL MINISTRY EVENT

Saturday, June 13th, 9 a.m. - 3 p.m. -- \$15
@ Holy Cross Lutheran Church in Menomonee Falls

On behalf of the newly formed Synod Youth Team, we're inviting you – anyone with a heart for youth ministry – to join us on June 13th for training in building relationships across generations. We especially encourage anyone who currently works with youth – staff or volunteers – and teens who have a passion for their faith – to join us for this event. We are bringing in the renowned Lyle Griner to help us as we begin a new season of youth and community ministry in the Greater Milwaukee Synod.

This interactive, hands-on event invites all ages to learn by doing, creating space for meaningful, shared experiences. Through simple, engaging activities, it models healthy, multi-generational communication that brings people closer together.

Who's this for?

- For staff, adults, young adults, and teenagers who have a heart to care (teenagers in high school may attend)
- For anyone who wants to grow stronger relational connections
- Learn to walk with others — and walk toward those who need connection
- Practice relational skills that deepen conversations and build trust
- Notice the moments where faith and everyday life meet
- Build a culture where people feel seen, heard, and valued

All In Relational ministry is less about having the right answers and more about being present. It's about showing up with curiosity, compassion, and courage to enter meaningful conversations. When we truly listen — especially to young people longing to be known and understood — trust grows, stories are shared, and faith becomes something lived together. Register at <https://milwaukeeesynod.org/> under Events.



COUNCIL CORNER

It's springtime. Our world is moving from darkness to light. I love hearing the birds sing at 5 a.m. and marveling at the handiwork of God. Sometimes it is difficult to enjoy these simple pleasures when life feels busy and out of control, or when something happens that stops us in our tracks. These times when everything seems overwhelming don't happen just once in our lives, but happen throughout our lives. How do we keep on going? How do we get out of bed each day and cope?

Like everyone else, I have experienced life-changing events. At one such time, I could not eat, I couldn't sleep, and couldn't hold a thought for more than five minutes. My desperate prayers became, "Are you even listening to me, God, because you are not answering my prayers?"

Deep in my heart, I knew God was listening to my every cry, yet I felt forgotten. I kept wondering, "What good could ever come of this?" I tried to find a Bible verse that would speak to me and comfort me, but it just wasn't there.

One day in my confusion and grief, I was walking along a little strip mall. As I passed a bookstore, I noticed a book in the window by one of my favorite authors, Og Mandino. I went in and bought one of his books. When I go home, I sat on the bed and leafed through the book. It opened to Chapter 9, and here's what I read: "The God memorandum: To: You; From: God. Take Counsel. I hear your cry. I have anguished over the cry of a hare choked in the noose of a snare, a sparrow tumbled from the nest of its mother, a child thrashing helplessly in a pond, and a son shedding his blood on a cross. Know that I hear you also. Be at peace. Be calm."

"That's it," I yelled. "God not only knows when a little sparrow tumbles from its nest, He knows every hair on my head." Of course, God knew exactly what I was going through, and I just had to trust in Him that something good would come of it.

Yes, for me, good things have come out of bad situations...thank you, God. I have hopefully become more compassionate and understanding with other people, less self-righteous and judgmental. I have tended

to my faith, making God a priority in my life, not just when things are bad. I have joined a couple of Bible study groups here at Mount Olive to become more grounded in my faith, and frankly, I now thirst for knowledge. Best of all, I found Mount Olive and a loving and caring church family here.

My favorite time of day is still early morning, and when I hear the birds singing, I am at peace and remember the words of the old hymn, "For His eye is the sparrow, and He watches over me."

Peace be with you,
Linda Burie, Council Secretary

PLASTIC COLLECTION

Starting in 2026, Trex has reconfigured its community-challenge recycling program. Instead of a yearly reward, they are now offering a **quarterly drawing** for groups that collect enough plastic to qualify.



Congratulations! Our first quarterly submission has been approved. This achievement has earned MTO an entry into the Trex Recycling Program quarterly lottery. **So far, for the second quarter of 2026, we have collected 254 pounds!**



Free Pantry/Kitchen Kupboard Food Pantry

Located in the lower level of Mount Olive, we are grateful for the Kitchen Kupboard Food Pantry and its ministry to our community's needy. The Pantry is open on select Thursday mornings or by appointment.

Also, *Mount Olive's Little Free Pantry* is located outside the lower doors of MTO and is available 24 hours a day/7 day a week. The Little Free Pantry is kept stocked by the Kitchen Kupboard Food Pantry team. Please note the items listed below and drop off in the basket marked **Food Pantry**, located in the Narthex: Mac & cheese boxes, potato and noodle boxes, dry goods, cereal, shelf-stable milk, granola bars, tuna, canned soups, canned fruits and vegetables, laundry soap, and deodorant.

They could use the following items: Kleenex, toilet paper, and paper towels, and bottled juice (orange, grape, and apple)



TUNES under the TREES

SECOND WEDNESDAYS 5:30-8pm
outside Mount Olive Lutheran
Church
211 Main Street, Mukwonago

FREE Entertainment!
Bring a lawn chair
and relax!

10
JUNE



Fred & Ginger

An acoustic duo playing an eclectic mix from the 60's to today and everything in between.

8
JULY

Charlie Smith

It's just Charlie and his guitar! Covering Jimmy Buffett, Zac Brown, Van Morrison, Warren Zevon, Gordon Lightfoot etc.



12
AUG

Everything Nice

Sweet vocals with a side of sass. Taking favorites, adding a touch of modern country, and a dash of fresh harmony.



MORE INFO HERE:



Mt. Olive
Lutheran Church
Rooted in God's Grace



Food
available
for
purchase
on site.



SERVICE TEAM UPDATE

The Service Team is launching a pilot frozen-meal program to assess the congregation's needs.

Starting mid-June, frozen meals will be available in the church freezer for anyone to take. Busy mom? Had a crazy day at work? Not feeling well? Recovering from an illness? Just need a break from cooking? Come by the church and grab a meal. Can't make it to church? We'll bring it to you.

More details will be available in the upcoming weekly bulletin and emails. Contact Deb Barnes for questions or information.

“Fill the Bag” Outreach for Hope Emaus’ School/Kids Kits

The purpose is to help Emaus’ ELCA students by donating much-needed supplies for the EASY (Emaus’ After School for Youth) and Neighborhood Camp programs. Your Mount Olive Service Team has set a goal of 50 bags. Lists and tags for individual items are located on the easel in the Narthex. Collection dates are: **June 21st & 28th and July 5th & 12th.**

Thank you for supporting students and families in our community.

School/Kids Kit (per bag)

Each canvas bag should include the following items:

- 1 canvas bag with handles (provided)
- 1 box of 12 colored pencils
- 1 two-pocket folder
- 1 pair round-tip scissors
- 1 12-inch ruler
- 1 handheld pencil sharpener
- 1 large pink eraser
- 6 unsharpened pencils
- 1 box of 24 crayons
- 1 pencil pouch

If you have any questions, please contact Sara Salmela.



Mount Olive Walking Group

Thursdays
10 –11 a.m.
(Weather permitting)

- ♥ Move your body.
- ♥ Lift your spirits.
- ♥ Connect with friends.

Even a **30-minute walk** can boost energy, sharpen your mind, and brighten your day!

Come as you are. Walk at your own pace. Enjoy good company and great conversation.

Everyone is welcome! Join us and step into joy!

— Pastor Steve Bogie

LOVE ONE ANOTHER MOUNT OLIVE’S CARE TEAM



Every one of us – even those of us who are fiercely independent – needs care and compassion from others. There are times in our lives when we feel able to give this support and other times when we have to humble ourselves to receive a caring hand.

We are in the beginning stages of forming a care ministry at Mount Olive. This endeavor will best be described as a social ministry. No professional services will be provided, just opportunities for human connection. We want to build a network of care and belonging within the family that is our congregation.

If you are currently finding life a little challenging, perhaps due to age or health issues, please call the office to express your interest in this new ministry. If you are being called to reach out and provide care and support to others, please do the same. Questions are welcome; call Pastor Steve or Betty Arntson.

Mount Olive Faith Explorers

Sunday, June 21: Graduate Recognition Sunday:

Join Mount Olive as we recognize and celebrate those who have completed their current educational pursuits.

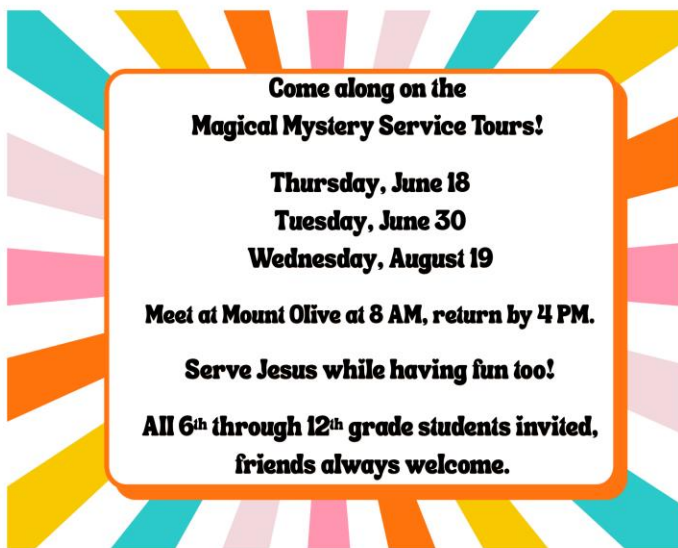
AoB and High School Summer Opportunities:

Mystery Mini- Mission Trips...

As we approach the end of the school year and as we look forward to summer, Pastor Steve and Cindy invite our 6th through 12th grade students to one-day-long *Magical Mystery Tours*. We will explore faith together while serving others and having fun. More details will be revealed as we near the dates, but please mark the following on your calendar and plan to attend from 8 AM to 4 PM:

- **Thursday, June 18th**, sign up by Monday, June 15th
- **Tuesday, June 30th**, sign up by Wednesday, June 24th
- **Wednesday, August 19th**, sign up by Wednesday, August 12th
- Friends are welcome too!
- If transportation is an issue, just let us know, and we will do our best to make arrangements for pick up and/or drop off at your home.

And as always, if you'd enjoy working with our younger set during the *week of VBC (August 3-7, 1-4 PM)*, please let Cindy or Pastor know! We'd love to have you as part of that week!



**Come along on the
Magical Mystery Service Tours!**

**Thursday, June 18
Tuesday, June 30
Wednesday, August 19**

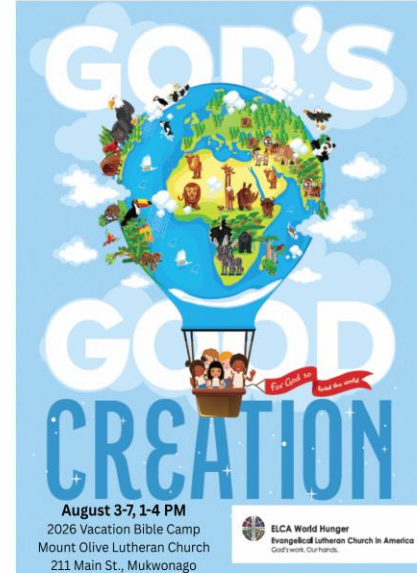
Meet at Mount Olive at 8 AM, return by 4 PM.

Serve Jesus while having fun too!

**All 6th through 12th grade students invited,
friends always welcome.**

Bring a water bottle, lunch and wear closed foot shoes.

MOUNT OLIVE VACATION BIBLE CAMP...



Mount Olive Vacation Bible Camp dates are set...

We will explore *God's Good Creation*

August 3rd through 7th from 1 - 4 p.m.!
(Note the change of time!)

All are welcome to join in the faith and fun! 6th graders and older are invited to assist as guides or junior guides. Registration forms are included elsewhere in this newsletter.

GRIEF SUPPORT

Grief can and does enter our lives in a huge variety of ways. You are invited to attend this group for very informal discussions in a safe place and supportive environment. Please feel free to call if you would like further information, login Zoom info, or have any questions: Betty Hinkelman.

The meeting is on the third Thursday of each month, beginning at 12:30 p.m. Attendance is at Mount Olive in the Fellowship Hall or on ZOOM, whichever you are comfortable with. **They will meet next on Thursday, June 18th at 12:30 p.m.**



INVITATION TO PRAY

You are invited to come and pray as we come together for contemplative prayer on the labyrinth. Join me for prayer with Holy Scripture using the ancient method of Lectio Divina, or you may choose to come for Centering Prayer, a prayer practice with silence as we simply rest in God's presence for a twenty-minute period of time. No experience is needed for either of these quiet methods of praying. A simple desire to be with God is all that you need to bring.

I invite you to come at any of these following times for this prayer opportunity (schedule of dates & times below). If you want to participate but need a different time slot or if you have any questions or would like further explanation, please feel free to call any time. I look forward to praying together. Betty Hinkelman -- home 262-662-0205 or cell 262-366-0640.

Monthly Schedule of Prayer Opportunities:

- **Lectio Divina:** 1st & 3rd Monday of each month...beginning at 11 a.m.
 - **Centering Prayer:** 2nd & 4th Monday of each month...beginning at 11 a.m.
-

WEDNESDAY NIGHT & SUNDAY MORNING BIBLE STUDY

Wednesday Night Bible study meets at 6:30 p.m. on Wednesdays in the Fellowship Hall. Our first topic will be the completion of the study we began last year of the New Testament book of Romans, under the expert teaching leadership of Richard Grosenick. When that is completed, Richard will lead us in a study of the New Testament Book of Acts. That book's complete name is The Acts of the Apostles, and it is the account of the ministries of Peter and Paul in spreading the gospel. Acts was written by Luke as a continuation of his Gospel message. Richard cannot be with us in January, so we will then do a 5-week study of the short New Testament book of James, led by various members of the class who have already volunteered.

The Wednesday night class welcomes people with all levels of Biblical knowledge. You need not be a Bible "expert." Furthermore, 25% of the class are members of congregations other than Mount Olive, so feel free to invite your friends and neighbors to attend with you. For more information contact Dwight Cruikshank.

The Sunday adult education group meets from 9–9:50 a.m., between the worship services. This next educational year, we will be meeting in the Fellowship Hall (except when other activities are scheduled for that space) so that we can accommodate more people and so we can more easily have snacks or beverages.

The main topic for this coming year's study will be the New Testament book of Matthew. Matthew's focus is the fulfillment of the Old Testament prophecies through Jesus – to prove that Jesus is the Messiah. We won't get through the entire book this year, but join us as we discover, or re-discover, the Gospel of Matthew – the birth and early years of Jesus, the beginnings of his ministry, and his journeys with the disciples.

In addition to Matthew, we will also be doing some short studies during Advent and Lent. This year we will explore the Miracles and Heroes of the Bible. They both promise to be intriguing subjects, so don't miss out!

Contact Laura Conry with any questions.

DON'T MUNCH ALONE BUNCH (DMAB)

Come and join us when Don't Munch Alone Bunch (DMAB) meets on Tuesday, June 9th at 11:30 a.m., at Morning Crumbs in Mukwonago.



DMAB is a fun fellowship activity, inviting all ages to meet, eat, and share together. Bring a friend if you'd like. There's no need to make a reservation, because we'll save a place at the table for you.

If you'd like more information, please call Bruce Gunderson. We hope you will join us.

THE KNOTTY KNITTERS...

Are a group that invites anyone interested to join them in the church library on Friday mornings from 10 a.m. to 12 noon to knit prayer shawls and such, share stories, and have goodies. **All are welcome...no experience necessary.**

Please note that the Knotty Knitters are taking a summer break... watch for more details come early September.

If you have questions, please call Betty Hinkelman or Inge Adams.

LADIES BOOK CLUB

Mount Olive's Ladies Book Club will meet next on Tuesday, June 9th, at 2 p.m., @ Mount Olive. They will be discussing "Daughter of Molokai" by Alan Brennert.

Our book club always welcomes new members. Join us to enjoy interesting books, discussions, and fun. Reading enriches our minds, hearts, and spirits.

All are welcome...even if you haven't read the book! If you have any questions, please contact or the church office at 262-363-8251.

GATHER FAITH EXPLORATION GROUP

Join us as we begin our summer bible study!
Tuesday, June 16th,
9:30 a.m. –
MTO Fellowship Hall



Summer 2026: "I am worthy,"
by the Rev. Sara Olson Smith

This summer, Women of the ELCA participants will gather in Des Moines, Iowa, under the theme "I am worthy." When Nobel Peace Prize winner Leymah Gbowee spoke in 2017, she invited WELCA participants to reclaim space for women and girls to lead and love in bold ways. This three-part Bible study will help us to define who we are, what we can be, and what we do in the world, in light of our God-given giftedness, identities and relationships. **(June 2026) "I am created in God's image. No matter what anyone else says."**

(Zoom link also available.) We will meet on the third Tuesday, June 16 at 9:30 am for our conversation and faith exploration using Gather magazine- a publication of the Women of the ELCA. Copies of the magazine and devotional will be available for all.

Joining for the first time? Please connect with Cindy if childcare availability is needed, and so that she can add you to the reminder email list and keep you informed of any changes in schedule.



Are you looking for a daily devotional? This easy-to-use resource (including background music!) is designed for youth and adults.

Check it out at d365.org, or follow them on Facebook. The ELCA is a partner in this ecumenical resource.

ELCA World Hunger

The Hunger Jar appreciates the jingling of our change! Our donations for 2026 are -- \$20.



If you are collecting your change at home for ELCA World Hunger during our time of online worship, please consider sending in a check or bringing the funds into Mount Olive so that they can be deposited. We will send them out into the world as a witness to our faithfulness during this critical time.

MONTHLY FINANCIAL STATUS from the Bookkeeper

	April 2026 Actual	April 2026 Plan
General Income	\$125,971	\$89,833
General Expenses	(108,825)	(107,492)
Surplus/(Deficit)	17,146	(17,659)
General Fund Cash Balance	20,712	

OFFERING/DONATION UPDATE

You can also share your financial gifts by:

- Mailing your offering to the office:
Mount Olive Lutheran Church
211 Main Street
Mukwonago, WI 53149
- Donating via our webpage: Make a one-time or recurring donation. Any recurring donation will require you to register if you don't already have a Simply Giving account. Contact Debbie in the office if you need any help with the webpage...262-363-8251.

Thank you for your ongoing support to the ministries of Mount Olive.

Dennis Martin
Treasurer
Finance and Stewardship Team

Ways to Give To Mount Olive

In Person

Place checks or cash in an offering envelope and drop in the offering plate as it goes by.

Text

Text 262-290-4066 with dollar amount (for example: 10) to set up a one-time or recurring donation.

Giving App

Download the 'Give Plus Church' app to set up a one-time or recurring donation.



Online

Visit <https://mountolive-elca.net/donate/> or scan the QR Code below to set up a one time or recurring donation.



At Mount Olive, we are committed to giving back to God for all he has given us so that we can help others locally and around the world.

**Find yourself without cash,
please use the above QR code to give online.**

VARIOUS TEAM/GROUP UPDATES

Group Meeting	Time and Frequency	Contact person
<i>Wednesday Text Study</i>	9:30 a.m. every Wednesday @ Mount Olive & via Zoom	Church Office mto@mountolive-elca.net
<i>Knotty Knitters</i>	10 a.m. every Friday	Inge Adams Betty Hinkelman
<i>Gather Faith Exploration Group: Meeting in person & via Zoom</i>	9:30 - 11 a.m. on the second Tuesday of each month	Cindy Dobberke Cindy.dobberke@mountolive-elca.net
<i>Sunday Morning Adult Bible Study</i>	Sundays @ 9 a.m.	Laura Conry
<i>Wednesday Evening Bible Study</i>	Wednesday evenings @ 6:30 p.m.	Dwight Cruikshank
<i>Don't Munch Alone Bunch</i>	11:30 a.m. on the second Tuesday of each month	Bruce Gunderson
<i>Lectio Divina: Meeting in person & via Zoom</i>	11 a.m. on Mondays – June 1st & 15th	Betty Hinkelman
<i>Centering Prayer: Meeting in person & via Zoom</i>	11 a.m. on Monday, June 8th & 22nd	Betty Hinkelman
<i>Grief Support: Meeting in person & via Zoom</i>	Meeting time varies; please contact Betty or see page 8	Betty Hinkelman
<i>Service Team</i>	Meets on the second Monday of every month at 9:30 a.m.	Deb Barnes
<i>Food Pantry Donations</i>	Donations can be made directly to the pantry as follows: June 11th & 25th -- 9:30-11:30 a.m. ; contact Carole Hahl @ 262-662-3953	Church Office mto@mountolive-elca.net
<i>Aluminum Can Donations</i>	Please continue collecting aluminum cans for our HS students to support their annual youth accompaniment trips; your donations can be dropped off at a later date!	Church Office mto@mountolive-elca.net



ALUMINUM CAN RECYCLING at Mount Olive!!

Yep, our High School students are still doing it! Want to help? Be sure to save your cans and drop off at the rear door at Mount Olive so that we can send the cans their way to the recyclers. It's a great way to save the environment AND our help our High School students when they head off on their next big Accompaniment trip!

PRAYING FOR MEMBERS at Mount Olive Lutheran Church



First of all, then, I urge that supplications, prayers, intercessions, and thanksgivings be made for everyone. I Timothy 2:1

It seems to me that no one is so poor as an individual for whom not a single soul is praying, and has no one who takes him or her personally and persistently to God in prayer. O. Hallesby, Prayer

“Praying for Every Member” is sponsored by Prayer Ministry. By using this monthly newsletter insert, we will pray unceasingly for each other.

6/1	Mary Beth & Ben Sande
6/2	Brian, Nicole, Easton, Arianna, & Winne Sanderson
6/3	Mike & Annette Schaezner
6/4	Teresa, Evan, & Anna Schell
6/5	Carl, Laura, Lila, & Oliver Schemm
6/6	Michael & Eva Schindhelm
6/7	Viktoria & Wolfgang Schnabl
6/8	Meghan, Bryan, Landen, & Liam Schneeweis
6/9	Ken & Cheryl Shanovich
6/10	Justin, Jack, Morgan, & Gwendolyn Sherman
6/11	Scott & Dawn Shuda
6/12	Lauren Shuda
6/13	James, Casey, Jameson, & Kennedy Sidders
6/14	Donna Silkworth
6/15	Alethea & Steve Sment
6/16	Trent & Lisa Smith, Trevor Smith
6/17	Tim & Karen Sperstad, Thomas Sperstad
6/18	Kim, Jaramey, Emily, & Joshua Stobbe
6/19	Deborah & Rick Struck
6/20	Sandi Summerfield
6/21	Duane Thornton
6/22	Kevin Thornton
6/23	Tim & Pat Vandehey
6/24	Terrence & Kay Vietzke
6/25	Allen Vollmer
6/26	Nichole Wagner
6/27	Nancy Ward
6/28	Sheri, Jamie, & Jenna Watkins
6/29	Rick, Robin, Blair, & Casey Webber
6/30	Alexa Westerdale

JUNE BIRTHDAYS...

James Cruikshank	6/1
Katie Lynch	6/1
Rilyn Schneeweis	6/1
Robert Brueggeman	6/3
Jerry Manke	6/3
Hannah Carey	6/4
Hailey Lindbloom	6/4
Jessica Cotturone	6/5
Donna Silkworth	6/5
Tim Vandehey	6/6
Lilah Ciesinski	6/9
Brooke Adcock	6/11
Bryan Schneeweis	6/12
Joshua Stobbe	6/12
Brian Dobberke	6/13
Ruth Lang	6/13
Jaramey Stobbe	6/15
Lilah Cruikshank	6/16
Bailey Adcock	6/17
Emily Zaddack	6/17
Andrea Kokott	6/18
Bonnie Dragert	6/21
Natalie Mack	6/25
Tim Sperstad	6/25
Nicholas Ciesinski	6/26
Mike Czarnecki	6/26
Connor Kokott	6/26
Benita Breedlove	6/27
Glenn Case	6/27
Elijah Cruikshank	6/27
Nichole Wagner	6/29

JUNE ANNIVERSARIES...

Tim & Pat Vandehey	6/6
Bill & Kathy Graser	6/7
David & Carolyn Nahrwold	6/14
Dennis & Susan Leffelman	6/17
Brian & Nicole Sanderson	6/18
Kristen & Michael Horning	6/21
Bill & Lorri Carpenter	6/23
Bryan & Meghan Schneeweis	6/23
Lee & Amy Libecki	6/24
Larry & Patti Redlin	6/24
Mark & Kari Grossklaus	6/28
Marc & Becky Roehl	6/28
Charles & Angie Mathe	6/30

COUNCIL CORNER

<u>Council Member</u>	<u>Phone Number</u>	<u>Email Address</u>
President Mike Zaddack		
Vice President Scott Shuda		
Secretary Linda Burie		
Treasurer Dennis Martin/Finance/Stewardship		
Inge Adams		
President Cindy Dobberke		
Larry Redlin		
Cheryl Shanovich		
Duane Thornton		
Pastor Steve Bogie	262-409-0743	pastorsteve@mountolive-elca.net

Adopted Council minutes are posted on the Council bulletin board for your review. Please feel free to contact any Council member listed above with any new ideas or caring concerns regarding Mount Olive. Please remember all our Council Members in your prayers.

GET CONNECTED

ACTS Team	Betty Arntson		
Administrative Assistant	Debbie Wagner	262-363-8251	mto@mountolive-elca.net
Adult Forum (Sunday mornings)	Laura Conry		
Altar Guild	Eva Schindhelm		
Gather Bible Study (monthly)	Cindy Dobberke	262-719-5711	cindy.dobberke@mountolive-elca.com
Bookkeeper	Doug Bue		finances@mountolive-elca.net
Coffee Fellowship	Debbie Wagner	262-363-8251	mto@mountolive-elca.net
AoB Coordinator	Cindy Dobberke	262-719-5711	cindy.dobberke@mountolive-elca.com
Custodial	Debbie Wagner	262-363-8251	mto@mountolive-elca.net
Don't Munch Alone Bunch (DMAB)	Bruce Gunderson		
Financial Secretary	Debbie Wagner	262-363-8251	mto@mountolive-elca.net
Grief Support Group	Betty Hinkelman		
Knotty Knitters	Betty Hinkelman Inge Adams		
Ladies Book Club	Diane Dickey		
Memorials	Angela Porter		
Mt. Menu Coffee	Debbie Wagner	262-363-8251	mto@mountolive-elca.net
Praise Team Director	Deanna Kulow		deanna.kulow@mountolive-elca.net
Prayer Chain	Betty Hinkelman		
Service	Deb Barnes		
Sunday School Coordinator	Cindy Dobberke	262-719-5711	cindy.dobberke@mountolive-elca.com
Thrivent Financial for Lutherans Congregational Advocate	Matt & Julie Fick		
Wednesday Night Bible Study	Dwight Cruikshank		

THIS WEEK AT MTO

Did you know that a weekly email is sent out each Wednesday entitled “This Week at MTO.” Each weekly email contains the following types of info: special messages, Mount Olive’s calendar for the coming week, and any other events that are happening at Mount Olive over the next week or so. If you are not currently receiving this email, please let the church office know your email address, and we will add you to the circulation list. Or sign up on our website at: www.mountolive-elca.net. Don’t miss out! **PLEASE LET US KNOW...**If you, a family member, or a friend would like to have a visit from the pastor, please notify the church office or Cindy Dobberke. We rely on you to keep us informed so that our ministry with you can continue: 262.363.8251 or mto@mountolive-elca.net.

JUNE 2026

<i>Sun</i>	<i>Mon</i>	<i>Tue</i>	<i>Wed</i>	<i>Thu</i>	<i>Fri</i>	<i>Sat</i>
	1 11am Lectio Divina 6:30pm Theology on Tap @ Badger Burger	2	3 9:30am Weekly Text Study 6:30pm Women's AA Mtg	4 10am MTO Walking Group	5	6
7 8am Worship & HC 9:30am Worship & HC 7:30pm Alanon*	8 9:30am Service Team 11am Centering Prayer 6:30pm Church Council	9 10am Muk Crazy Quilters* 11:30am DMAB Lunch @ Morning Crumbs 2pm Ladies Book Club	10 9:30am Weekly Text Study 1pm Worship Team Mtg 5:30-8pm Tunes Under the Stars—Fred & Ginger 6:30pm Women's AA Mtg	11 9:30am MCC Food Pantry* 10am MTO Walking Group	12	13
14 8am Worship & HC 9:30am Worship & HC 7:30pm Alanon*	15 11am Lectio Divina	16 9:30am Gather Faith Exploration Group 10am Coffee with Dudes @ Brew 52	17 9:30am Weekly Text Study 1pm Muk Crazy Quilters* 6:30pm Women's AA Mtg	18 AoB/HS Mystery Mini-Mission Trip 10am MTO Walking Group 12:30pm Grief Support Group 1pm Muk Crazy Raffle Quilt Committee*	19	20
21 8am Worship & HC 9:30am Worship & HC Graduate Recognition @ both services 7:30pm Alanon*	22 11am Centering Prayer	23	24 9:30am Weekly Text Study 6:30pm Women's AA Mtg	25 9:30am MCC Food Pantry* 10am MTO Walking Group	26	27
28 8am Worship & HC 9:30am Worship & HC 7:30pm Alanon*	29	30 AoB/HS Mystery Mini-Mission Trip				

MOUNT OLIVE EVANGELICAL LUTHERAN CHURCH
211 Main Street, Mukwonago WI 53149-1525

Telephone: (262) 363-8251
www.mountolive-elca.net

Email: mto@mountolive-elca.net

