



**Mt. Olive  
Lutheran Church**  
Rooted in God's Grace

Mount Olive Evangelical Lutheran Church, ELCA  
211 Main Street, Mukwonago, WI 53149-1525  
Ph: 262-363-8251 E-mail: [mto@mountolive-elca.net](mailto:mto@mountolive-elca.net)  
Web-site: [www.mountolive-elca.net](http://www.mountolive-elca.net)

**June 2023**

## ALL ARE WELCOME

### **SUMMER SUNDAY WORSHIP & HOLY COMMUNION:**

8 & 930 a.m. – In-Person Worship & HC  
Our worship services will be livestreamed @ Facebook,  
and YouTube. Facebook stream also found on the home  
page of our website: [www.mountolive-elca.net](http://www.mountolive-elca.net)

### **OFFICE HOURS**

Monday-Thursday 8 a.m. - 2 p.m.  
Church Office: 262-363-8251  
Email: [mto@mountolive-elca.net](mailto:mto@mountolive-elca.net)

### **CHURCH STAFF**

**Pastor – Rev. Dr. Sandy Chrostowski**  
Phone: 262-363-8251  
Email: [pastorsandy@mountolive-elca.net](mailto:pastorsandy@mountolive-elca.net)

### **Administrative Assistant**

Debbie Wagner

### **Maintenance**

Open Position

### **Housekeeping**

Marie Sackett

### **Worship Accompanist/Praise Team Director**

Deanna Kulow [deanna.kulow@mountolive-elca.net](mailto:deanna.kulow@mountolive-elca.net)

### **Sunday School Coordinator**

Cindy Dobberke

### **AofB Coordinator**

Cindy Dobberke 262-719-5711  
[cindy.dobberke@mountolive-elca.net](mailto:cindy.dobberke@mountolive-elca.net)

### **Prayer Chain**

Betty Hinkelman 262-662-0205 or  
Church office 262-363-8251

### **Websites**

[www.mountolive-elca.net](http://www.mountolive-elca.net)  
[www.milwaukee-synod.org](http://www.milwaukee-synod.org)  
[www.elca.org](http://www.elca.org)



## TWO SUMMER WORSHIP SERVICES

**MEMORIAL DAY thru  
LABOR DAY WEEKENDS –  
Sunday Worship & Holy Communion  
8 a.m. – Worship & HC  
and  
9:30 a.m. – Worship & HC  
(No Education Hour during summer)**

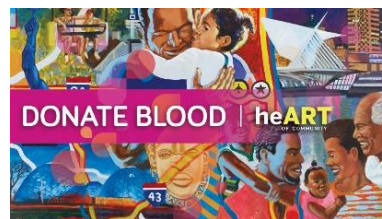
\*\*\*\*\*

## MOUNT OLIVE BLOOD DRIVE

Join Mount Olive's Health & Wellness and Service  
Teams and the BloodCenter of Wisconsin for a blood  
drive!

**THURSDAY, JUNE 1<sup>st</sup>  
Fellowship Hall -- 2-7 p.m.**

Almost anyone can donate blood. Basic requirements for  
donating include being at least 17 years old, weighing at  
least 110 lbs., and in generally good health. It takes about  
an hour to donate, and with  
one donation, you can save  
up to three lives.



**Thursday  
June**

**1**

2 – 7 PM  
Helpful tip:  
Make sure to eat a healthy  
meal and drink plenty of  
water before donating.  
Eligibility questions?  
Call 877-232-4376



**Mount Olive Lutheran Church Blood Drive  
Fellowship Hall, 211 Main St, Mukwonago**

**RESERVE YOUR SPOT TODAY!**  
For an appointment, visit [bit.ly/mtojune2023](http://bit.ly/mtojune2023),  
or call the parish office at 262-363-8251.

Appointments are encouraged, and walk-ins  
are also welcome (as space allows).

**FEEL THE BEAT OF SUMMER!** As a thank you,  
all attempting donors will receive a Summerfest  
code to redeem for a general admission ticket.  
(must enter code MUSIC in online appointment  
notes and have a valid email to receive this offer)

**-PLUS- Donors will be entered for a chance to win  
a motorcycle! -**

THIS DRIVE IS IN PART A COMMUNITY  
SERVICE PROJECT OF THE  
MOUNT OLIVE LUTHERAN CHURCH  
AND IS NOT A FUNDRAISER FOR THE  
CHURCH. ALL DONATIONS ARE  
WELCOME TO SUPPORT YOUR LOCAL  
COMMUNITY PROJECTS.



Walk-ins are also  
welcome. BloodCenter of  
Wisconsin is the only  
provider of blood to 55  
Wisconsin hospitals in 28  
counties.

Pat Vandehey

## A MESSAGE FROM PASTOR SANDY

Summer brings with it a change of weather and of pace. Life both slows down and somehow simultaneously speeds up. We give thanks as another season of Faith Explorers concludes, and for participants of all ages. Now that school is out for most students, families begin a full schedule of vacations, camps, community activities, and friendship connections with children. Here at Mt. Olive, we now enjoy worship each Sunday at 8:00 am and 9:30 a.m. The scripture texts for Sundays in summer invite us to areas of discipleship as Jesus' call us, claims us and sends us to share the good news. In a world that is ever-changing and often complex, this invitation is life-giving to each of us who longs for acceptance, belonging, grace and love.

The Mission Exploration (MET) Team has been "hitting their stride" as they meet weekly to complete the Mission Site Profile (MSP). They hosted "Curiosity Sessions" and shared a summary of the Congregational Vitality Survey responses, listening questions and FAQs with congregation members. In coordination with Greater Milwaukee Synod staff, we look forward to a **Town Hall Meeting on Sunday, July 16<sup>th</sup>** (time to be announced). We welcome Bishop Paul Erickson and Pastor Kristin Nielsen, Assistant to the Bishop for Congregations in Mission (who will be working with the leaders of Mt. Olive during the call process) to present the completed Mission Site Profile (MSP) prepared by the MET Team. Mt. Olive's constitution also specifies that a Call Committee of seven members shall be elected by the Church Council. This team is responsible for receiving names of pastoral candidates, determining the candidate visit and interview process, conducting interviews and bringing a candidate to the congregation.

We trust that the Holy Spirit will lead and guide the Call Committee as they assemble and as they discern the next pastoral leader that the people Mt. Olive seek for the future. As Jesus said to His disciples, "*The harvest is plentiful, but the laborers are few; therefore ask the Lord of the harvest to send out laborers into His harvest.*" (Matthew 9:37-38). The mission of Jesus' followers is to continue the mission of Jesus Himself. May we, like His first disciples continue to proclaim the Gospel through our words and deeds.

In Christ,

Pastor Sandy Chrostowski  
Interim Pastor

## MISSION EXPLORATION TEAM (MET) UPDATE...

By the time you read this, the Ministry Site Profile will be complete!!! The Mission Exploration Team will present it to Council for their approval at their June 20<sup>th</sup> meeting. We will then present the profile to the congregation at the **Town Hall Meeting scheduled for July 16<sup>th</sup>** (time to be announced).

The Bishop from the Greater Milwaukee Synod, Paul Erickson, will be joining us that day, as well as Kristin Nielsen who is the Assistant to the Bishop for Congregations in Mission. At the meeting, you will be able to provide input and feedback on the document. You will also be able to meet the Call Committee who will take over from the MET Team and who are responsible for the interview process.

The Ministry Site Profile serves as the first impression of Mount Olive that prospective candidates will get. It is intended to be a description of the vision and mission of our ministry site. We have created this document through prayer and with a focus on the Spirit. We have used the congregation's input through the Yellow Card questions, the Vitality Survey, the Curiosity Sessions and conversations. We hope you find our understanding of our life and work to be a true representation of who we are.

As this is my last update, a few thanks are in order:

- You -- the congregation -- thank you for your patience, for your input and for your faith in this team and the process.
- Debbie Wagner has been so helpful getting us organized and equipped with what we need -- always ready at the drop of a hat to do whatever we asked. Thank you, Debbie!!
- Pastor Sandy's guidance, support and encouragement have been indispensable. She keeps us centered and focused, and we are so grateful that she is with us during this interim time.
- Finally, the most amazing team ever: Brooke Adcock, Kiana Adcock, Duane Thornton, Eva Schindhelm, Cindy Dobberke, and Bruce and Glenna Gunderson. Their spirit centered, insightful comments (not to mention the surprise treats) made those two-hour meetings fly by!! It has been a privilege and a pleasure putting the Ministry Site Profile together with you. Thank you for using your gifts to serve the congregation in this way!

God's Peace,  
Karen Sperstad



## COUNCIL CORNER

Hello Mount Olive,

These words are also in a song co-written and sung by Amy Grant. The first time I heard the song was in Texas at a Believercize class, aerobic exercise to Christian music. It was one of our cool down songs, so I was always happy to hear this music knowing the class was about to end. Whew! After class I would find myself singing this song throughout the day. If we allow it to, God's word will be our guide throughout our lives and a source of peace in our hearts. Which makes me wonder...how do we at Mount Olive share God's word and God's love to be a light unto someone's path?

At our annual congregational meeting this year, we voted to approve the purchase of an electronic sign. The sign will be perpendicular to Main Street. Drivers passing by or waiting at the stop light will be able to read the sign.

Hundred and hundreds of people pass our church every day. Some commuting to work or making a hard drive to hep a loved one. Maybe a child or elderly person is walking by on their very different walks of life. Between our daily trials and life's turmoil, one thing that remains universal is that Jesus can offer each and everyone of us something we need. Is it a family setting of group meals where loneliness seems to fade? Is it a book club to enjoy conversation and compassion? Is it an informal Bible study to learn and grow in one's faith? Is it a safe place or al little glimmer of hope for a faith yet uncovered? Could the light of our sign be a beacon of hope in any one of these circumstances?

I pray that our new sign will be an inspiration for passerby's. I pray that Mount Olive, which is rooted in God's grace, will continue to preach the Gospel so it will extend beyond each of us as individuals. Each of us can live out our faith to be a light that dispels darkness from the lives of those around us.

Peace be with you and let your light shine.

Linda Burie  
Council Secretary

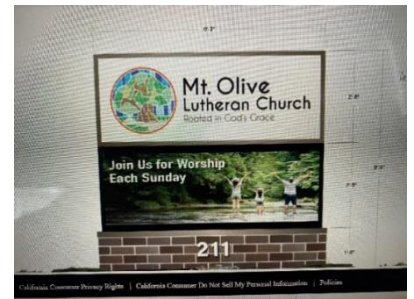
*"Your word is a lamp to my feet  
and a light for my path." Psalm 119:105*

## LIGHT THE SIGN

At the January congregation meeting, MTO moved forward with plans to build a new electronic sign along Main Street. Total cost of the project is approximately \$32,000 and we have secured a MTO ACTS grant for \$15,000, the council approved a fundraising campaign of \$10,000 and will use available memorial funds for the balance.

You can help make the sign a reality. Please consider making a contribution to the Light the Sign campaign. Checks may be made out to Mount Olive with "Sign Fund" on the memo line. You may also contribute online, denoting the same purpose. Contributions may be made in memory or in honor of a loved one. If you would like, please add a lightbulb to the display in the Narthex.

Current funds raised are \$5,334, and we have a good start toward reaching our goal of \$10,000. Thanks to all who have contributed.



## "WHAT ARE THE GRADS DOING?"

We will be blessing our graduating students on **June 18<sup>th</sup> & 25<sup>th</sup>** as they move into the next phase of their life. If you have a family member of any age graduating at any time from the fall of 2022 through the spring of 2023 from high school, technical school, military training, college, or grad school, please inform the church office regarding their plans for the future. This includes those headed away or remaining in the Mukwonago area. Please help us celebrate our grads in a meaningful way!

And if you have any questions, please contact the church office at 363-8251 or [mto@mountolive-elca.net](mailto:mto@mountolive-elca.net).



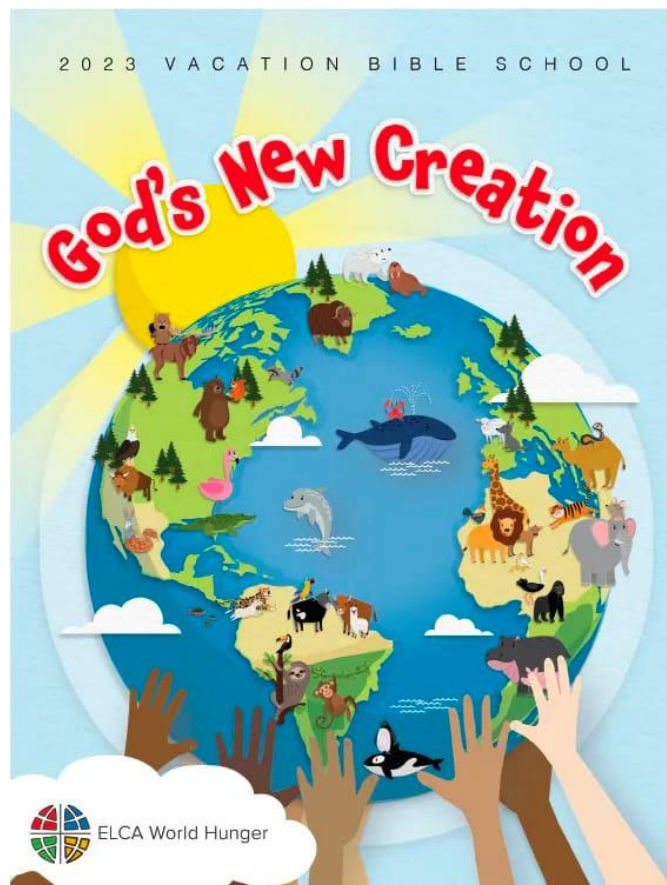


## Faithful Innovations Team

During the month of June, your Faithful Innovations team invites you to ponder these guiding principles for Mission, and to answer the question, *where do you see God active in the world?*



**Maintenance/Janitorial:** Mount Olive is seeking person with tradesman-type skill set, basic building maintenance knowledge (carpentry, plumbing, electric, HVAC, etc.), 6-10 hours per week. Contact church office at 262-363-8251 or [mto@mountolive-elca.net](mailto:mto@mountolive-elca.net) for further details.



## **Join Mount Olive for 2023 Vacation Bible Camp, God's New Creation!**

When: August 7-11, 2023, 9 am until noon.  
Cost: \$12 per child or \$30 per family

Join us as we explore faith in God with the following daily themes:

*Gathered By God, Helping Hands, Everyone is Important, Small Miracles, and Many Gifts, one God.*

Feel free to register with the form included in this newsletter. We love new friends coming along! Please share with your neighbors and family.

***Would you like to help make VBC happen? Many hands are needed!***

Adult guides needed for many areas, and junior guides who have completed 6<sup>th</sup> grade are welcome to come along as we learn and grow together. Please contact Cindy if you are available!

## FAITH EXPLORERS

**Faith Explorers: Sunday School** finished up their year during the month of May. Many thanks to our 2022-23 leadership team. What a year, what a team! Thanks again!

### **Faith Explorers: High School**

We are heading to Savannah in July, and there is room for you!

When: July 23-28

Cost: \$400

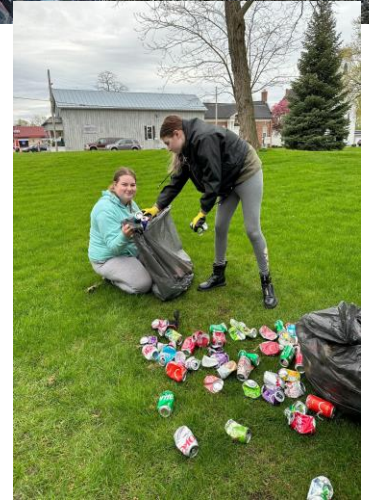
Contact Cindy if you have further questions!



**Faith Explorers: Affirmation of Baptism** hosted Bingo at Birchrock during May. We had a great time with the residents and hope to do it again soon!



**MTO High School youth...**thank you for your donations of aluminum cans! The Mount Olive High School students sorted the cans into bags (four years' worth!), and we sent two full pickup trucks and trailers to the recyclers, earning \$363 for the High School dedicated fund. Little by little, bit by bit, we are pulling together funding for the trip to Savannah! We celebrated with a bonfire and hot dog cookout.



**Sunday, June 4<sup>th</sup>, 5 p.m.** All High School Bonfire... We had so much fun at the first one, we will try again for an end of the year gathering on the Mount Olive green space. All High School students are invited to come along!





## MOUNT OLIVE ACTS TEAM UPDATE

The Mount Olive ACTS team recently disbursed gifts to help grow God's ministry to several partners. Each month we will highlight a recipient in order to bring awareness to how the memorial from Dorothy Gollmar's estate is being used to spread God's love. Those partners included:

- Milwaukee Christian – food pantry needs and staffing
- Camp Kindred – camp scholarships
- Life Navigators – guardianship program
- Camp Odayin – camp costs
- Breaking the Chains - program staffing
- Kathy's House – supplies
- Waukesha Free Clinic – specialty programs
- Neighborhood House – staff and supplies
- Safe Babies Healthy Families – date of birth bag supplies
- Centro Legal – litigation costs

The memorial fund has approximately \$120k remaining and will be reserved for MTO ministries including internal and external applications. Internal applications made by members (individuals or small groups) of Mount Olive to do personal/team ministries to extend or enhance ministry activities are referred to as internal applications. External applications represent any program or initiative seeking to meet the need of others is eligible to apply for funding.

-----



## SERVICE TEAM

Thank you to all our sewers and helpers who created our dresses for Africa. So far, we have collected 72 dresses. We will be mailing these off in mid-June so those who still may be sewing away please turn them in by June 11<sup>th</sup>. Thank you to those who participated in our Sew Day. It was great fun.

### Shoes for Jesus

Once again, we will be collecting your gently worn shoes in the month of July. If you are cleaning closets after school is out, bring them by the church and drop them in the designated Shoes for Jesus boxes.

Next Meeting: We will be meeting again on **Monday, June 5<sup>th</sup>, at 5 p.m.** (note the time change) to put together blankets for our graduates.



Your Service Team

## GRIEF SUPPORT

Grief can and does enter our lives in a huge variety of ways. You are invited to attend either one of these groups for very informal discussions in a safe place and supportive environment. Please feel free to call if you would like further information, login Zoom info, or have any questions: Betty Hinkelman.

- **Thursday Group:** The meeting is on the third Thursday of each month beginning at 12:30 p.m. Attendance is at Mount Olive in the Fellowship Hall or on ZOOM, whichever you are comfortable with. **June's date is Thursday, June 15<sup>th</sup>.**
- **Monday Group:** This group meets monthly in person at Mount Olive in the Fellowship Hall on the last Monday of the month at 6:30 p.m. **June's date is Monday, June 26<sup>th</sup>.**

---

## WEDNESDAY NIGHT & SUNDAY MORNING BIBLE STUDY

The Wednesday night Bible study class has completed their 2022-2023 session. Watch for details in August/September for the 2023-2024 session. If interested, contact Dwight Cruikshank.

The Sunday Morning Adult Bible Study has also completed their 2022-2023 season. Watch for details in September for their 2023-2024 education season.

Contact Laura Conry with any questions.



## INVITATION TO PRAY

You are invited to come and pray as we come together for

contemplative prayer on the labyrinth. Join me for prayer with Holy Scripture using the ancient method of Lectio Divina, or you may choose to come for Centering Prayer, a prayer practice with silence as we simply rest in God's presence for a twenty-minute period of time. No experience is needed for either of these quiet methods of praying. A simple desire to be with God is all that you need to bring.

I invite you to come at any of these following times for this prayer opportunity (schedule of dates & times below). If you want to participate but need a different time slot or if you have any questions or would like further explanation, please feel free to call any time. I look forward to praying together. Betty Hinkelman.

### **Monthly Schedule of Prayer Opportunities:**

#### **Lectio Divina:**

- 1<sup>st</sup> & 3<sup>rd</sup> Monday of each month...beginning at 11 a.m.
- Every Friday on zoom (link will be emailed)...beginning at 9 a.m.

**Centering Prayer:** 2<sup>nd</sup> & 4<sup>th</sup> Monday of each month...beginning at 11 a.m.

---



## DON'T MUNCH ALONE BUNCH (DMAB)



Why not join us when Don't Munch Alone Bunch (DMAB) meets on **Tuesday, June 13<sup>th</sup>, at 11:30 a.m.**, at Mount Olive's Fellowship Hall. We will be ordering Domino's Pizza, and soda will be provided, or bring your own. (Please plan to contribute to help pay for the pizza.) DMAB is a welcoming and wonderful fellowship activity, inviting all ages to meet, eat and share together. Bring a friend if you'd like. If you plan to attend, please call Glenna at the number below so we can order enough pizza. Plan to come. We'll save a place at the table for you.

If you have questions, please call Glenna Gunderson. We hope you will join us.

---

## THE KNOTTY KNITTERS...

Are a group that invites anyone interested to join them in the church library on Friday mornings from 10 a.m. to 12 noon to knit prayer shawls and such, share stories, and have goodies. **All are welcome...no experience necessary.**

*Please note that the Knotty Knitters are taking a summer break...watch for more details come early September.*

If you have questions, please call Betty Hinkelman or Inge Adams.

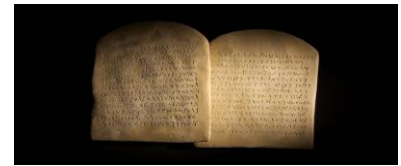
---

## LADIES BOOK CLUB

Mount Olive's Ladies Book Club will meet next on **Tuesday, June 13<sup>th</sup>, at 2 p.m., @ Mount Olive.** They will be discussing "The Family Upstairs" by Lisa Jewell.

All are welcome...even if you haven't read the book! If you have any questions, please contact Diane Dickey or the church office at 363-8251.

## GATHER SMALL GROUP BIBLE STUDY



**Tuesday, June 13<sup>th</sup>, at 9:30 a.m. Gather magazine study group**

All are invited to attend, either in person or via zoom. Please contact the MTO office or Cindy Dobberke for the zoom link. We will continue to explore the 10 Commandments in a study written by Rev. Krista von Zychlin. If you are looking for a low-key, no prep study where deep conversations abound, this might be the one for you!

**We will conclude our sessions on the Ten Commandments from the April Gather magazine, with Session four: Guardrails for love of God and neighbor (Commandments 7, 8, 9 & 10)**

In this fourth and final session, we will consider sayings from Proverbs and other biblical wisdom related to minding our tongues, integrity in the marketplace, and practical ways to serve our neighbors.

Our Gather field trip to Paradise Springs was a great time! Many thanks to Debi Struck for organizing! What a beautiful space to enjoy God's creation!





## WORSHIP MINISTRY OPPORTUNITIES ABOUND AT MOUNT OLIVE!

Might you be interested in helping to lead worship as an AV operator, assisting minister, reader, usher, altar guild, fellowship hour providers, or in other roles?

Please contact Cindy Dobberke or Debbie Wagner in the Mount Olive office for more information. Training provided!

### ELCA World Hunger

**The Hunger Jar appreciates the jingling of our change!** Starting fresh as of January 1, 2023, our donation amount has crept up a bit -- **\$755.11.**



If you are collecting your change at home for ELCA World Hunger during our time of online worship, please consider sending in a check or bringing the funds into Mount Olive so that they can be deposited. We will send them out into the world as a witness to our faithfulness during this critical time.

### MONTHLY FINANCIAL STATUS from the Bookkeeper

	<b>April 2023 Actual</b>	<b>April 2023 Plan</b>
General Income	\$102,670	\$91,073
General Expenses	(105,371)	(107,613)
Surplus/(Deficit)	(2,701)	(16,540)
General Fund Cash Balance	34,938	

## Ways to Give To Mount Olive



### In Person

Place checks or cash in an offering envelope and drop in the offering plate as it goes by.



### Text

Text 262-290-4066 with dollar amount (for example: 10) to set up a one-time or recurring donation.



### Giving App

Download the 'Give Plus Church' app to set up a one-time or recurring donation.



### Online

Visit <https://mountolive-elca.net/donate/> or scan the QR Code below to set up a one time or recurring donation.



At Mount Olive, we are committed to giving back to God for all he has given us so that we can help others locally and around the world.

## OFFERING/DONATION UPDATE

You can also share your financial gifts by:

1. Mailing your offering to the office:  
Mount Olive Lutheran Church  
211 Main Street  
Mukwonago, WI 53149
2. Donating via our webpage: Make a one-time or recurring donation. Any recurring donation will require you to register if you don't already have a Simply Giving account. Contact Debbie in the office if you need any help with the webpage...262-363-8251.

Thank you for your ongoing support to the ministries of Mount Olive.

Dennis Martin  
Treasurer  
Finance and Stewardship Team

## VARIOUS TEAM/GROUP UPDATES

<b>Group Meeting</b>	<b>Time and Frequency</b>	<b>Contact person</b>
<b><i>Wednesday Bible Study</i></b>	9 a.m. every Wednesday @ Mount Olive & via Zoom	<b><i>Church Office</i></b> <a href="mailto:mto@mountolive-elca.net">mto@mountolive-elca.net</a>
<b><i>Knotty Knitters</i></b>	10 a.m. every Friday	<b><i>Inge Adams</i></b> <b><i>Betty Hinkelman</i></b>
<b><i>Gather Bible Study: Meeting in person &amp; via Zoom</i></b>	9:30 - 11 a.m. on second Tuesday of each month	<b><i>Cindy Dobberke</i></b> <a href="mailto:Cindy.dobberke@mountolive-elca.net">Cindy.dobberke@mountolive-elca.net</a>
<b><i>Sunday Morning Adult Bible Study</i></b>	Sundays @ 9 a.m. – <b>No adult education during the summer</b>	<b><i>Laura Conry</i></b>
<b><i>Wednesday Evening Bible Study</i></b>	Wednesday evenings @ 6:30 p.m. – <b>No sessions during the summer</b>	<b><i>Dwight Cruikshank</i></b>
<b><i>Don't Munch Alone Bunch</i></b>	11:30 a.m. on second Tuesday of each month	<b><i>Glenna and Bruce Gunderson</i></b>
<b><i>Lectio Divina: Meeting in person &amp; via Zoom</i></b>	11 a.m. on Mondays – <b>June 5<sup>th</sup> &amp; 19<sup>th</sup></b> ; 11 a.m. on Fridays via Zoom – <b>June 2<sup>nd</sup>, 9<sup>th</sup>, 16<sup>th</sup>, 23<sup>rd</sup>, &amp; 30<sup>th</sup></b>	<b><i>Betty Hinkelman</i></b>
<b><i>Centering Prayer: Meeting in person &amp; via Zoom</i></b>	11 a.m. on Monday – <b>June 12<sup>th</sup> &amp; 26<sup>th</sup></b>	<b><i>Betty Hinkelman</i></b>
<b><i>Grief Support: Meeting in person &amp; via Zoom</i></b>	Meeting time varies, please contact Betty or see page 7	<b><i>Betty Hinkelman</i></b>
<b><i>Service Team</i></b>	Sharing info and ideas via email – <b>next meeting on June 5<sup>th</sup> @ 5 p.m.</b>	<b><i>Jean Cruikshank</i></b>
<b><i>Food Pantry Donations – June Needs: Dish &amp; Laundry Soap</i></b>	Donations can be made directly to pantry as follows: <b>June 8<sup>th</sup>, 22<sup>nd</sup>, &amp; 30<sup>th</sup> -- 9:30-11:30 a.m.</b> ; contact Carole Hahl @ 262-662-3953	<b><i>Church Office</i></b> <a href="mailto:mto@mountolive-elca.net">mto@mountolive-elca.net</a>
<b><i>Aluminum Can Donations</i></b>	Please continue to collect aluminum cans for our HS students to support their annual youth accompaniment trips; your donations can be dropped off at a future date!	<b><i>Church Office</i></b> <a href="mailto:mto@mountolive-elca.net">mto@mountolive-elca.net</a>



### ALUMINUM CAN RECYCLING at Mount Olive!!

Yep, our High School students are still doing it! Want to help? Be sure to save your cans and drop off at the rear door at Mount Olive so that we can send the cans on their way to the recyclers. It's a great way to save the environment AND our help our High School students when they head off on their next big Accompaniment trip!

## PRAYING FOR MEMBERS at Mount Olive Lutheran Church

First of all, then, I urge that supplications, prayers, intercessions, and thanksgivings be made for everyone. I Timothy 2:1

It seems to me that no one is so poor as an individual for whom not a single soul is praying, and has no one who takes him or her personally and persistently to God in prayer. O. Hallesby, Prayer

“Praying for Every Member” is sponsored by Prayer Ministry. By using this monthly newsletter insert, we will pray unceasingly for each other.

6/1	Tim, Karen, Benjamin, & Thomas Sperstad
6/2	Kim, Jaramey, Emily, & Joshua Stobbe
6/3	Deborah & Richard Struck
6/4	Sandi Summerfield
6/5	Stephanie, Larry, Sydney, & Kamryn Swenor
6/6	Duane & Sue Thornton
6/7	Kevin Thornton
6/8	Tim & Pat Vandehey
6/9	Terrence & Kay Vietzke
6/10	Allen Vollmer
6/11	Nichole Wagner, Callie, Melissa, & Ashley Peterson
6/12	Nancy Ward
6/13	Sheri, Jamie, & Jenna Watkins
6/14	Rick, Robin, Blair, & Casey Webber
6/15	Sara & Alexa Westerdale, Alayna Calvin-Salmela
6/16	Jane Whiteaker
6/17	Shannon, Robert, Nathaniel, Anthony, Ciara, & Arkadia Wilcher
6/18	Mary Winchowky
6/19	Carey, Brian, & Benjamin Wisotzke
6/20	Matthew, Becky, Logan, & Haley Woessner
6/21	Russell Wright
6/22	Michael & Laura Zaddack, Kalin & Dylan Troka
6/23	Phyllis & Emily Zaddack
6/24	Karin Zoril
6/25	Inge Adams
6/26	Adam, Kiana, Brooke, & Bailey Adcock
6/27	Christina, Johnathan, Cassandra, & Nathaniel Altenburg
6/28	Jason & Kim Anderson, Nicole Anderson
6/29	Scott & Laurie Anderson
6/30	Jerry & Betty Arntson

### JUNE BIRTHDAYS...

James Cruikshank	6/1
Katie Lynch	6/1
Tracey Pritchard	6/1



Rilyn Schneeweis	6/1
Robert Brueggeman	6/3
Elizabeth Krickhahn	6/3
Jerry Manke	6/3
Hannah Carey	6/4
Hailey Lindbloom	6/4
Jessica Cotturone	6/5
Donna Silkworth	6/5
Tim Vandehey	6/6
Steven Lang	6/7
Lilah Ciesinski	6/9
Brooke Adcock	6/11
Elizabeth Graser	6/12
Joshua Stobbe	6/12
Brian Dobberke	6/13
Ruth Lang	6/13
Matthew Anderson	6/14
Larry Swenor	6/14
Jaramey Stobbe	6/15
Bailey Adcock	6/17
Emily Zaddack	6/17
Alyssa Corey	6/18
Andrea Kokott	6/18
Justin Polka	6/19
Bonnie Dragert	6/21
Linda Hafemeister	6/23
Miguel Ocampo	6/23
Natalie Mack	6/25
LaVerne Schaffner	6/25
Tim Sperstad	6/25
Nicholas Ciesinski	6/26
Mike Czarnecki	6/26
Benjamin Hunkel	6/26
Gemma Johnson	6/26
Connor Kokott	6/26
Glenn Case	6/27
Shawn Fitzgerald	6/29
Nichole Wagner	6/29

### JUNE ANNIVERSARIES...

Stephanie & Larry Swenor	6/5
Tim & Pat Vandehey	6/6
Matthew & Phuong Anderson	6/7
Bill & Kathy Graser	6/7
Shannon & Robert Wilcher	6/7
David & Carolyn Nahrwold	6/14
Dennis & Susan Leffelman	6/17
Brian & Nicole Sanderson	6/18
Kristen & Michael Horning	6/21
Bill & Lorri Carpenter	6/23
Lee & Amy Libeck	6/24
Larry & Patti Redlin	6/24
Mark & Kari Grossklaus	6/28
Marc & Becky Roehl	6/28
Charles & Angie Mathe	6/30



<b>COUNCIL CORNER</b>		
<b><u>Council Member</u></b>	<b><u>Phone Number</u></b>	<b><u>Email Address</u></b>
<b>President Mike Zaddack</b>		
<b>Vice President Cheryl Shanovich</b>		
<b>Secretary Linda Burie</b>		
<b>Treasurer Dennis Martin/Finance/Stewardship</b>		
<b>Inge Adams</b>		
<b>Matt Fick</b>		
<b>Tim Sperstad</b>		
<b>Rev. Dr. Sandy Chrostowski</b>		<b><a href="mailto:pastorsandy@mountolive-elca.net">pastorsandy@mountolive-elca.net</a></b>
Adopted Council minutes are posted on the Council bulletin board for your review. Please feel free to contact any Council member listed above with any new ideas or caring concerns regarding Mount Olive. Please remember all our Council Members in your prayers.		

<b>GET CONNECTED</b>			
<b>ACTS Team</b>	<b>Betty Arntson Marc Roehl</b>		
<b>Administrative Assistant</b>	<b>Debbie Wagner</b>	<b>262-363-8251</b>	<b><a href="mailto:mto@mountolive-elca.net">mto@mountolive-elca.net</a></b>
<b>Adult Forum (Sunday mornings)</b>	<b>Laura Conry</b>		
<b>Altar Guild</b>	<b>Eva Schindhelm</b>		
<b>AMMPARO</b>	<b>Karen Sperstad</b>		
<b>Gather Bible Study (monthly)</b>	<b>Cindy Dobberke</b>	<b>262-719-5711</b>	<b><a href="mailto:cindy.dobberke@mountolive-elca.com">cindy.dobberke@mountolive-elca.com</a></b>
<b>Bookkeeper</b>	<b>Doug Bue</b>		<b><a href="mailto:finances@mountolive-elca.net">finances@mountolive-elca.net</a></b>
<b>Coffee Fellowship</b>	<b>Debbie Wagner</b>	<b>262-363-8251</b>	<b><a href="mailto:mto@mountolive-elca.net">mto@mountolive-elca.net</a></b>
<b>AoB Coordinator</b>	<b>Cindy Dobberke</b>	<b>262-719-5711</b>	<b><a href="mailto:cindy.dobberke@mountolive-elca.com">cindy.dobberke@mountolive-elca.com</a></b>
<b>Custodial</b>	<b>Debbie Wagner</b>	<b>262-363-8251</b>	<b><a href="mailto:mto@mountolive-elca.net">mto@mountolive-elca.net</a></b>
<b>Don't Munch Alone Bunch (DMAB)</b>	<b>Glenna Gunderson</b>		
<b>Financial Secretary</b>	<b>Debbie Wagner</b>	<b>262-363-8251</b>	<b><a href="mailto:mto@mountolive-elca.net">mto@mountolive-elca.net</a></b>
<b>Grief Support Group</b>	<b>Betty Hinkelman</b>		
<b>Health &amp; Wellness</b>	<b>Pat Vandehey</b>		
<b>Knotty Knitters</b>	<b>Betty Hinkelman Inge Adams</b>		
<b>Ladies Book Club</b>	<b>Diane Dickey</b>		
<b>Loaves &amp; Fishes</b>	<b>Cindy Dobberke</b>	<b>262-719-5711</b>	<b><a href="mailto:cindy.dobberke@mountolive-elca.com">cindy.dobberke@mountolive-elca.com</a></b>
<b>Memorials</b>	<b>Angela Porter</b>		
<b>Mt. Menu Coffee</b>	<b>Debbie Wagner</b>	<b>262-363-8251</b>	<b><a href="mailto:mto@mountolive-elca.net">mto@mountolive-elca.net</a></b>
<b>Praise Team Director</b>	<b>Deanna Kulow</b>		<b><a href="mailto:deanna.kulow@mountolive-elca.net">deanna.kulow@mountolive-elca.net</a></b>
<b>Prayer Chain</b>	<b>Betty Hinkelman</b>		
<b>Service</b>	<b>Jean Cruikshank</b>		
<b>Sunday School Coordinator</b>	<b>Cindy Dobberke</b>	<b>262-719-5711</b>	<b><a href="mailto:cindy.dobberke@mountolive-elca.com">cindy.dobberke@mountolive-elca.com</a></b>
<b>Thrivent Financial for Lutherans</b>	<b>Cindy Dobberke</b>	<b>262-719-5711</b>	<b><a href="mailto:cindy.dobberke@mountolive-elca.com">cindy.dobberke@mountolive-elca.com</a></b>
<b>Congregational Advocate</b>			
<b>Wednesday Night Bible Study</b>	<b>Dwight Cruikshank</b>		

### **THIS WEEK AT MTO**

**Did you know that a weekly email is sent out each Wednesday entitled “This Week at MTO.”** Each weekly email contains the following types of info: special messages, Mount Olive’s calendar for the coming week, and any other events that are happening at Mount Olive over the next week or so. If you are not currently receiving this email, please let the church office know your email address, and we will add you to the circulation list. Or sign up on our website at: [www.mountolive-elca.net](http://www.mountolive-elca.net). Don’t miss out! **PLEASE LET US KNOW...**If you, a family member, or a friend would like to have a visit from the pastor, please notify the church office or Cindy Dobberke. We rely on you to keep us informed so that our ministry with you can continue: 262.363.8251 or [mto@mountolive-elca.net](mailto:mto@mountolive-elca.net).

# JUNE 2023

<i>Sun</i>	<i>Mon</i>	<i>Tue</i>	<i>Wed</i>	<i>Thu</i>	<i>Fri</i>	<i>Sat</i>
				<b>1</b> 2-7pm Blood Drive	<b>2</b> 9am Lectio Divina Via Zoom	<b>3</b>
<b>4</b> 8am Worship & HC 9:30am Worship & HC 7:30pm Alanon*	<b>5</b> 11am Lectio Divina 5pm Service Team	<b>6</b>	<b>7</b> 9am Weekly Text Study	<b>8</b> 9:30am MCC Food Pantry*	<b>9</b> 9am Lectio Divina Via Zoom	<b>10</b>
<b>11</b> 8am Worship & HC 9:30am Worship & HC 7:30pm Alanon*	<b>12</b> 11am Centering Prayer	<b>13</b> 9:30am Gather Small Group Bible Study 11:30am DMAB Lunch @ MTO/Pizza 2pm Ladies Book Club	<b>14</b> 9am Weekly Text Study	<b>15</b> 12:30pm Grief Support Group	<b>16</b> 9am Lectio Divina Via Zoom	<b>17</b>
<b>18</b> 8am Worship & HC 9:30am Worship & HC Graduate Recognition 7:30pm Alanon*	<b>19</b> 11am Lectio Divina	<b>20</b> 6:30pm Church Council	<b>21</b> 9am Weekly Text Study	<b>22</b> 9:30am MCC Food Pantry*	<b>23</b> 9am Lectio Divina Via Zoom	<b>24</b>
<b>25</b> 8am Worship & HC 9:30am Worship & HC / Chiello & Corey Baptisms Graduate Recognition 7:30pm Alanon*	<b>26</b> 11am Centering Prayer 6:30pm Grief Support Group	<b>27</b>	<b>28</b> 9am Weekly Text Study	<b>29</b> 9:30am MCC Food Pantry*	<b>30</b> 9am Lectio Divina Via Zoom	

**MOUNT OLIVE EVANGELICAL LUTHERAN CHURCH**

211 Main Street, Mukwonago WI 53149-1525

Telephone: (262) 363-8251

[www.mountolive-elca.net](http://www.mountolive-elca.net)

Email: [mto@mountolive-elca.net](mailto:mto@mountolive-elca.net)