



ALL ARE WELCOME

SUNDAY WORSHIP & HOLY COMMUNION:

8 & 10 a.m. – In-Person Worship & HC
Our worship services will be livestreamed @ Facebook, and YouTube. Facebook stream also found on the home page of our website: www.mountolive-elca.net

OFFICE HOURS

Monday-Thursday 8 a.m. - 2 p.m.
Church Office: 262-363-8251
Email: mto@mountolive-elca.net

CHURCH STAFF

Pastor – Rev. Dr. Sandy Chrostowski
Cell Phone:
Email: pastorsandy@mountolive-elca.net

Administrative Assistant
Debbie Wagner

Maintenance ***Housekeeping***
Jerry Jewson Marie Sackett

Worship Accompanist/Praise Team Director
Deanna Kulow
deanna.kulow@mountolive-elca.net

Sunday School Coordinator
Cindy Dobberke

AofB Coordinator
Cindy Dobberke 262-719-5711
cindy.dobberke@mountolive-elca.net

Prayer Chain
Betty Hinkelman 262-662-0205 or
Church office 262-363-8251

Websites
www.mountolive-elca.net
www.milwaukeeesynod.org
www.elca.org



Your Council leadership invites you to attend the Annual Meeting of Mount Olive Lutheran Church.

**Sunday, January 29th, 11 a.m.
in the Mount Olive Fellowship Hall.**

Annual reports are available in the entryway. If you would like a hard or an electronic copy sent to your home, please contact the Mount Olive office.

Let us gather to share and learn about the ministries of Mount Olive.



**Worship Times
at Mount Olive:
8 a.m. and 10 a.m.**

Our services will be livestreamed on our Facebook page, YouTube channel, and found on our webpage with a Facebook link. The livestreamed recordings will also be available for your viewing 24 hours a day, every day of the year.



LEANING INTO LENT

Lent is a season of preparation that often has taken on a quiet, introspective quality, serving as a balance to the loud, bright, boisterous festival seasons of the church year.

Ash Wednesday invites the whole Christian community into disciplines of Lent: self-examination and repentance, prayer and fasting, sacrificial giving, and works of love. At **Ash Wednesday worship on February 22nd at 7 p.m.**, we mark our foreheads with ashes, which traces the life-giving cross of Jesus given at baptism.

During Lenten Wednesdays, we gather for **Soup Suppers at 6 p.m. (March 1st, 8th, 15th, 22nd, 29th)** in which we will be inviting you to table conversations using the “Cup of Topics” which are simple, easy topics to get to know a bit about your table partners. Afterwards, we will gather for **Lenten worship at 7 p.m.** This year, we will be offering reflections from Holly Whitcomb’s book, *The Practice of Finding: How Gratitude Leads to the Way of Enough*. As we counteract the persistent message of scarcity, the practice of “finding” is a doorway to gratitude and to the awareness of having received enough. We will consider together:

- March 1st – Learning to Savor and Finding Wonder
- March 8th – Finding Vulnerability through Saying Yes
- March 15th – Reaching Beyond Suffering and Finding Resilience
- March 22nd – Overcoming Hinderances to Gratitude and Finding Thankfulness Once Again
- March 29th – Valuing What You Have and Finding the Contentment of Enough

Please join us for this Lenten time of fellowship, meal, prayer and worship as we turn our focus on our own death and resurrection promised in baptism. **Leaning into Lent** helps us to experience simplicity, encounter stillness, and nurture quiet moments to offer us renewal, refreshment and the promise of a “spiritual Springtime” in the depths of winter.

Gratefully,
Pastor Sandy Chrostowski

COUNCIL CORNER

It is that time of year when we complete our Stewardship pledge drive efforts and work on the annual “Plan for Ministry” (annual “budget”). As we conclude these 2022 efforts and develop our financial planning for 2023, I am impressed and grateful for the dedicated financial stewardship of our members. This is especially true over the past three years, when the congregation has experienced the challenges of the pandemic and the trials and opportunities that a pastoral transition present.



I very often am struck by the profound generosity demonstrated by our congregation and wish I had the time to reach out to each of you personally and express gratitude and acknowledge your faithful stewardship to the ministry at Mount Olive.

With that said, I would like to express some long overdue “thanks” to each and every one of you as part of my Council Corner:

To those who have anonymously dropped cash in the offering plate...God knows who you are...Thank You. (See Matthew 6:4)

To those who do not have an abundance of wealth but have given from the heart, from what you have...Thank You. (See Luke 21:1-4)

To those that recognize how richly they have been blessed by God and have returned a portion of those blessings to support the ministry and to help those less fortunate...Thank You. (See Luke 3:11)

To those who have made a pledge commitment or that participate in Simply Giving...Thank You. (See 2 Corinthians 9:7)

To those who give of their time and talent to the ministry at Mount Olive...Thank You. (See 1 Peter 4:10)

To all of you, who have supported our ministry in any way during these challenging times...Thank You. (See Deuteronomy 15:10)

Dennis Martin
Treasurer and Stewardship Team

*“To follow Christ means that you will always be on a journey.
It means that your work is never done.
To follow Christ means that the minute you think you’ve arrived,
you’ve only actually just begun...
Our journeys are not without mountains and valleys of their own.
Our journey can be filled with joy and sorrow, delight and disappointment.
Just because we know the charge of our journey is to share the love of Christ with the world, it doesn’t mean that we don’t also need it along the way, too.
To exist, to be alive, is to at the same time have gifts to journey with others while needing someone else’s gifts to journey with you.
That my friends is community.
And that’s the community that has journeyed together to this point.
To grow us into this church.
Over the last two* years, we’ve journeyed mountains and valleys together.
We’ve journeyed joy and sorrow together.
We’ve journeyed death and life together.
And it has led to this.
My friends, welcome to your church.
Welcome to the resting place on our journey.
Welcome to the place that’s been created for you.
Welcome to the place that calls you to belonging.
Welcome to the place that calls you to joy.
Welcome to the place that calls you to rest.
Welcome to the place that calls you to peace.
And welcome to the place that fuels you for the journey.
You are the Magi.
You are the ones that shine light in this weary world.
Welcome to Epiphany.
Welcome to the journey.
And also, come and rest awhile.
Our journey is long, and we’ve got miles to go.
Amen.”*

- Pastor Emily Norris, The Dwelling, Winston-Salem, NC

**or as in Mount Olive’s case, almost one hundred and two years...*

THANK YOU MOUNT OLIVE!

thank you

As my term on the Mount Olive council ends, I want to say thank you for allowing me to be a part of the past six years of Mount Olive’s journey and thank you for supporting each other, the Council, as well as Pastor Scot, Pastor Karen and most recently, Pastor Sandy during the years that I was your president. The pandemic and post pandemic years have given us the opportunity to discover a different way of being “church,” allowing creativity, growth, and connections in so many different ways.

We are rooted in God’s Grace, may we continue to be faithful to our call to love God and to love our neighbors.

Peace be with you today and every day,

Cindy Dobberke



**MISSION EXPLORATION TEAM
(MET) UPDATE...
COMING TO AN INBOX NEAR YOU!**

Dear Mount Olive,

There is a wonderful opportunity coming up that we need EVERYONE to participate in. It is the Congregational Vitality Survey.

It is a short, multiple-choice questionnaire that will help us complete the Ministry Site Profile. That document is a crucial step in the calling of a pastor. We really do need and value everyone's input.

Please take advantage of this opportunity to share your thoughts on Mount Olive's ministry and mission. It is anonymous and will run **from Sunday, February 5th, through Sunday February 19th**. You must complete the whole survey in order for your response to be counted. No blanks!!!

Please make sure Debbie has an individual email for each member of the household over 14. If that is not available, please request a paper copy to be mailed to you by contacting Debbie in the church office at 262.363.8251 or mto@mountolive-elca.com. THANK YOU!

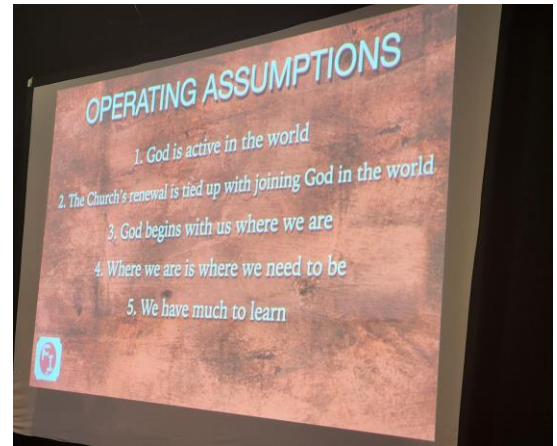
The MET Team...

Brooke Adcock, Duane Thornton, Eva Schindhelm,
Bruce Gunderson, Glenna Gunderson, Kiana Adcock,
Karen Sperstad, Cindy Dobberke,
and Interim Pastor Sandy Chrostowski



Faithful Innovations Team update:

It was wonderful to be with our Greater Milwaukee Synod learning community on Saturday, January 21st. We gathered together at Inspiration Studios in West Allis, a former funeral home turned art studio/gallery and performance space.



During our second learning community gathering, we:

- Shredded (yes, using a paper shredder) the SHAME that holds us back
- Met new friends in Christ with whom to Dwell in the Word, using Acts 16:6-15
- Shared where we saw God active in the world, as we listened to each other during Dwelling in the Word, during our drive and individual walks around the village and town of Mukwonago, during our many Listening to Others conversations and the Midnight Magic Advent Path experiment
- Learned at least two new names and one new story during lunch
- Explored action learning and discovered God's leading, as we "behave" our way into new ways of thinking
- Began work on our next learning experiment. Care to join us? We'd love to include you as we continue to name and explore God's presence and activity in our lives. Contact Betty Arntson, Betty Hinkelman, Conrad Dierks, Cindy Dobberke and Pastor Sandy for more information.

FAITH EXPLORERS

Faith Explorers: Sunday School begins their Sunday sessions at 9:45 a.m. in the Mount Olive sanctuary. After conversation, songs, and prayer we head to the lower level to explore faith together! All between 3 years old and 5th grade are invited to join us! Come and see!

Faith Explorers: 4th and 5th Grade Retreat. All 4th and 5th graders are invited to join Pastor Sandy and Cindy for a time of faith exploration just for you! We'll have skits, bible time, scavenger hunts and FOOD! Plan on attending from **3-5 p.m. on Saturday, February 18th**, come along and bring a friend!

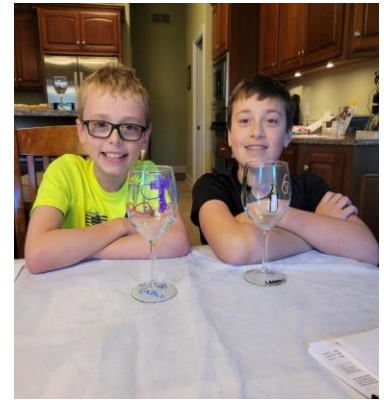
Faith Explorers: Affirmation of Baptism (AoB) meets on **February 7th** this month for a look at "What about the Church?" All 6th - 8th grade families are welcome to join us! Friends, as always, are welcome too!

Faith Explorers: High School



Announces their summer 2023 accompaniment site: Savannah, Georgia! Yep, back to where Mount Olive's (then mission, now accompaniment) trips began in 2008. Nine total spots are available. Cost to you: \$400. Come and learn more **on Sunday, February 5th, at 11 a.m.** in the Mount Olive library, or contact Cindy Dobberke at cindy.dobberke@mountolive-elca.net.

Faith Explorers: First Communion for all who would like to explore God's gift of Holy Communion, in this session geared towards children and a parent or significant adult.



We will meet on **Saturday, April 1st, from 11 a.m. - 1 p.m.** Letters will be mailed to third graders and their families. However, if you or your child are ready to learn more about the sacrament of holy communion, please contact Pastor Sandy or Cindy Dobberke. All are welcome at the Lord's Table at Mount Olive, family and friends are invited to learn more about what this means!

Just One More Ministry Food Sorts: February brings not one, but two opportunities to join others from Mount Olive at JOMM. The plan: on **February 11th or February 25th**, meet at MTO at 8 a.m. to carpool to JOMM in Glendale, where we will learn about this amazing ministry of food reclamation (and Mount Olive ACTS grant recipient), serving where they ask us for two hours. We will then return to MTO by noon. ***You must contact Cindy to sign up no later than five days before the event; space is limited.*** 7th graders and up with parental permission forms completed are welcome to attend without a parent. For more information or to join the groups, please contact Cindy Dobberke at cindy.dobberke@mountolive-elca.net.

Report on the Reverse Advent food drive collection: we collected 377 pounds of shelf stable food, plus beautiful knit hats and scarves from the Knotty Knitters, for the guests at the pantry of the Milwaukee Christian Center. Thank you all so much for your faithful support!



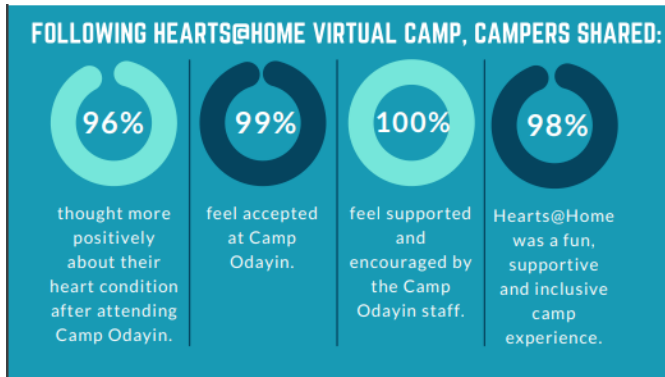
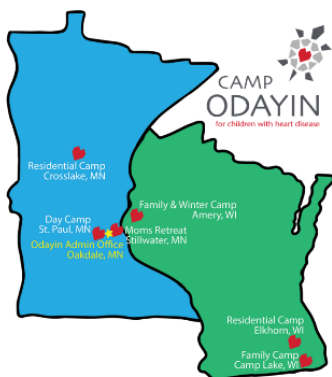
MOUNT OLIVE ACTS TEAM UPDATE

The Mount Olive ACTS team recently disbursed gifts to help grow God's ministry to several partners. Each month we will highlight a recipient in order to bring awareness to how the memorial from Dorothy Gollmar's estate is being used to spread God's love.

Who is Camp Odayin: A return partner of ACTS, Camp Odayin provides fun, safe and supportive camp experiences and community-building opportunities for young people with heart disease and their families. This mission is based on a holistic approach to healing hearts, a desire to nurture and develop independence, confidence, and acceptance throughout the camper's lives, the importance of a sense of community among their heart family, and an emphasis on having fun and celebrating life!

The beautiful heartland of Minnesota is home to Ojibwa people. The camp derives its name from the Ojibwa word for heart, "odayin".

How does Camp Odayin Help? Camp Odayin provides life-changing camp experiences to children with heart disease and their families. Participants pay just \$25 to attend Virtual Camp, Residential Camp, Winter Camp, Day Camp, Family Camp, or the Moms Retreat. The program initiated virtual camps due to the pandemic and now continues them.



Residential Camp allows campers in grades 1-11 to enjoy swimming, boating, arts and crafts, volleyball, horseback riding, nature, basketball, and music in a safe, medically-supervised environment during a five-day experience. Camp Odayin hosts a Residential Camp in two locations. There are three weeks in July at Camp Knutson in Crosslake, MN and one week in August at Camp Lutherdale in Elkhorn, WI. Campers may attend only one summer camp session.

Day Camp allows campers in grades K-3 to experience arts & crafts, nature, and new friends while receiving an introduction to our mission during this one-day program. Campers enjoy environmental education and interaction with a variety of animals at the Dodge Nature Center in St. Paul, MN.



How can MTO help? Volunteers are always appreciated. Volunteer info can be found at www.campodayin.org/volunteer. Also, a list of supplies can be found at www.campodayin.org/ways-to-give. Please see their video on their homepage.



SERVICE TEAM

Many thanks to all who donated eye glasses...a total 41 pairs were collected!

February Service Team Collection

In February we will be accepting donations for LIFE'S CONNECTION, a Mukwonago area organization that provides pregnancy health and education services to local families.

We will be collecting the following new items:

- Diapers, all sizes (Newborn to Pullups)
- Pack N Plays
- Breast Feeding Pillows (Example: Boppy Pillows)
- Baby Monitors
- Activity Mats

We will also be accepting cash donations in order to purchase larger items such as car seats. Checks may be made out to Mt. Olive and the check or envelope marked for Life's Connection.

Looking Ahead

In March and April, the team will be making little girl dresses to donate to "littledressesforafrica." We will need pillow cases that can be sewn into dresses. New pillowcases can be dropped off at the church at any time in the next two months.

*"Love cannot remain by itself – it has no meaning. Love has to be put into action and that action is service."
Mother Theresa*

We would love to welcome new members to our team any time. We meet on the first Monday of each month at 6 p.m. at Mount Olive.

Your Service Team

GREAT BALLOON BUILD!



Are you looking for a unique way to serve your neighbors and specifically Inspiration Ministries of Lake Geneva*? Consider this awesome opportunity! Learn more here and register online!

<https://www.wisconsinballoondecor.com/bigballoonbuild>.

There are a variety of roles to fill, such as registration clerks, food service assistants, monitors, parking attendants and drivers. Our coordinators will contact you and match you to a preferred role and time slot (generally 3-4 hours). You may sign up for as many as you would like.

*Inspiration Ministries is a place where our residents can grow, work, mature in their faith, and lead productive, joy-filled lives. We've enriched the lives of adults with disabilities who call IM home for more than 70 years. 100% of the proceeds will go to Inspiration Ministries and Inspired, a premium neighborhood coffee shop in downtown Lake Geneva, employing people with disabilities. They're celebrated, job trained, coached and, over time, placed into a fully integrated work setting.

When: March 23-26, 2023

Where: Jackson Family Activity Center at Covenant Harbor in Lake Geneva

Volunteer Incentive: a logo T-Shirt and an event ticket for you and a friend

GRIEF SUPPORT

Grief can and does enter our lives in a huge variety of ways. You are invited to attend either one of these groups for very informal discussions in a safe place and supportive environment. Please feel free to call if you would like further information, login Zoom info, or have any questions: Betty Hinkelman.

- **Thursday Group:** The meeting is on the third Thursday of each month beginning at 12:30 p.m. Attendance is at Mount Olive in the Fellowship Hall or on ZOOM, whichever you are comfortable with. **February's date is Thursday, February 16th.**
- **Monday Group:** This group meets monthly in person at Mount Olive in the Fellowship Hall on the last Monday of the month at 6:30 p.m. **February's date is Monday, February 27th.**

WEDNESDAY NIGHT & SUNDAY MORNING BIBLE STUDY

The Wednesday night Bible study class resumed in September. This year we are studying the Gospel according to Luke. There will be a special emphasis on Jesus' parables and miracles, which Luke contains more of than any of the other 3 Gospels. As usual, we will not meet during Advent and Lent. The class will conclude May 17th, having spent 24 sessions covering Luke's 24 chapters. If interested, contact Dwight Cruikshank.

The Sunday Morning Adult Bible Study meets at **9 a.m.** For the 2022-2023 education season, the Adult Education group will start in the beginning...the beginning of the Bible that is, with the book of Genesis. Join us as we delve into the stories that are told in Genesis. Stories of creation, stories of sin and judgement, stories of Abraham and the promise of salvation, stories of corruption, lust, and murder. Watch the announcements for upcoming previews of what shocking Biblical events we will be uncovering in upcoming Sundays!

Contact Laura Conry with any questions.



INVITATION TO PRAY

You are invited to come and pray as we come together for contemplative prayer on the labyrinth. Join me for prayer with Holy Scripture using the ancient method of Lectio Divina, or you may choose to come for Centering Prayer, a prayer practice with silence as we simply rest in God's presence for a twenty-minute period of time. No experience is needed for either of these quiet methods of praying. A simple desire to be with God is all that you need to bring.

I invite you to come at any of these following times for this prayer opportunity (schedule of dates & times below). If you want to participate but need a different time slot or if you have any questions or would like further explanation, please feel free to call any time. I look forward to praying together. Betty Hinkelman.

Monthly Schedule of Prayer Opportunities:

Lectio Divina:

- 1st & 3rd Monday of each month...beginning at 11 a.m.
- Every Friday on zoom (link will be emailed)...beginning at 9 a.m.

Centering Prayer: 2nd & 4th Monday of each month...beginning at 11 a.m.

God 
Answers
Prayers

DON'T MUNCH ALONE BUNCH (DMAB)



Why not join us when Don't Munch Alone Bunch (DMAB) meets **on Wednesday, February 15th, at 11:30 a.m.** at Chen's in Mukwonago. **NOTE DATE CHANGE PLEASE.**

DMAB is a wonderful fellowship activity, inviting all ages to meet, eat and share together. Bring a friend if you'd like. There's no need to make a reservation and we welcome you and we'll save a place at the table for you.

If you have questions, please call Glenna Gunderson. We hope you will join us.

THE KNOTTY KNITTERS...

Are a group that invites anyone interested to join them in the church library on Friday mornings from 10 a.m. to 12 noon to knit prayer shawls and such, share stories, and have goodies. **All are welcome...no experience necessary.**

If you have questions, please call Betty Hinkelman or Inge Adams.

LADIES BOOK CLUB

Mount Olive's Ladies Book Club will meet next on **Wednesday, February 15th, at 2 p.m., @ Mount Olive.** They will be discussing "If I Could Turn Back Time" by Mary Frame. **Please note date change.**

All are welcome...even if you haven't read the book! If you have any questions, please contact Diane Dickey or the church office at 363-8251.

GATHER SMALL GROUP BIBLE STUDY

Let's *Gather* for a small group discussion. All are invited!

Tuesday, February 14th, at 9:30 a.m. Gather magazine study group meets on All are invited to attend, either in person or via zoom. Please contact the MTO office or Cindy Dobberke for the zoom link.



We will continue to explore the 10 Commandments in a study written by Rev. Krista von Zychlin. If you are looking for a low-key, no prep study where deep conversations abound, this might be the one for you!

February's session: *The Ten Commandments: Reviving the Soul, Rhythms and Respect.* Some might say the Old Testament commands Remember the Sabbath and Honor Your Folks seem outdated and quaint. After all, didn't Jesus routinely break the Sabbath? Didn't Jesus (on occasion) talk back to his mother? Yet these commandments are far from outdated. Find out how these commands offer a source of peace and inspiration in today's often hectic and generationally segregated society and church.



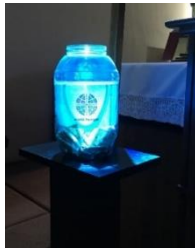
**WORSHIP MINISTRY
OPPORTUNITIES ABOUND
AT MOUNT OLIVE!**

Might you be interested in helping to lead worship as an AV operator, assisting minister, reader, usher, altar guild, fellowship hour providers, or in other roles?

Please contact Cindy Dobberke or Debbie Wagner in the Mount Olive office for more information. Training provided!

ELCA World Hunger

The Hunger Jar appreciates the jingling of our change! Starting fresh as of January 1, 2022, our donation amount has crept up a bit - **-\$1,828.06.**



If you are collecting your change at home for ELCA World Hunger during our time of online worship, please consider sending in a check or bringing the funds into Mount Olive so that they can be deposited. We will send them out into the world as a witness to our faithfulness during this critical time.

**MONTHLY FINANCIAL STATUS
from the Bookkeeper**

	December 2022 Actual	December 2022 Plan
General Income	\$268,249	\$292,220
General Expenses	(253,799)	(321,568)
Surplus/(Deficit)	14,450	(29,348)
General Fund Cash Balance	45,445	

**Ways to Give
To Mount Olive**

 **In Person**

Place checks or cash in an offering envelope and drop in the offering plate as it goes by.

 **Text**

Text 262-290-4066 with dollar amount (for example: 10) to set up a one-time or recurring donation.

 **Giving App**

Download the 'Give Plus Church' app to set up a one-time or recurring donation.



 **Online**

Visit <https://mountolive-elca.net/donate/> or scan the QR Code below to set up a one time or recurring donation.



At Mount Olive, we are committed to giving back to God for all he has given us so that we can help others locally and around the world.

OFFERING/DONATION UPDATE

You can also share your financial gifts by:

1. Mailing your offering to the office:
Mount Olive Lutheran Church
211 Main Street
Mukwonago, WI 53149
2. Donating via our webpage: Make a one-time or recurring donation. Any recurring donation will require you to register if you don't already have a Simply Giving account. Contact Debbie in the office if you need any help with the webpage...262-363-8251.

Thank you for your ongoing support to the ministries of Mount Olive.

Dennis Martin
Treasurer
Finance and Stewardship Team

VARIOUS TEAM/GROUP UPDATES

Group Meeting	Time and Frequency	Contact person
<i>Wednesday Bible Study</i>	9 a.m. every Wednesday @ Mount Olive & via Zoom	<i>Church Office</i> mto@mountolive-elca.net
<i>Knotty Knitters</i>	10 a.m. every Friday	<i>Inge Adams</i> <i>Betty Hinkelman</i>
<i>Gather Bible Study: Meeting in person & via Zoom</i>	9:30 - 11 a.m. on second Tuesday of each month	<i>Cindy Dobberke</i> Cindy.dobberke@mountolive-elca.net
<i>Sunday Morning Adult Bible Study</i>	Sundays @ 9 a.m.	<i>Laura Conry</i>
<i>Wednesday Evening Bible Study</i>	Wednesday evenings @ 6:30 p.m.	<i>Dwight Cruikshank</i>
<i>Don't Munch Alone Bunch</i>	11:30 a.m. on second Tuesday of each month	<i>Glenna and Bruce Gunderson</i>
<i>Lectio Divina: Meeting in person & via Zoom</i>	11 a.m. on Mondays – February 6th & 20th ; 11 a.m. on Fridays via Zoom – February 3rd, 10th, 17th, & 24th	<i>Betty Hinkelman</i>
<i>Centering Prayer: Meeting in person & via Zoom</i>	11 a.m. on Monday – February 13th & 27th	<i>Betty Hinkelman</i>
<i>Grief Support: Meeting in person & via Zoom</i>	Meeting time varies, please contact Betty or see page 8	<i>Betty Hinkelman</i>
<i>Service Team</i>	Sharing info and ideas via email – next meeting on February 6th @ 6 p.m.	<i>Jean Cruikshank</i>
<i>Food Pantry Donations – February Needs: Dish & Laundry Soap</i>	Donations can be made directly to pantry as follows: February 9th & 23rd -- 9:30-11:30 a.m. ; contact Carole Hahl @ 262-662-3953	<i>Church Office</i> mto@mountolive-elca.net
<i>Aluminum Can Donations</i>	Please continue to collect aluminum cans for our HS students to support their annual youth accompaniment trips; your donations can be dropped off at a future date!	<i>Church Office</i> mto@mountolive-elca.net



ALUMINUM CAN RECYCLING at Mount Olive!!

Yep, our High School students are still doing it! Want to help? Be sure to save your cans and drop off at the rear door at Mount Olive so that we can send the cans on their way to the recyclers. It's a great way to save the environment AND our help our High School students when they head off on their next big Accompaniment trip!

PRAYING FOR MEMBERS at Mount Olive Lutheran Church



First of all, then, I urge that supplications, prayers, intercessions, and thanksgivings be made for everyone. I Timothy 2:1

It seems to me that no one is so poor as an individual for whom not a single soul is praying, and has no one who takes him or her personally and persistently to God in prayer. O. Hallesby, Prayer

“Praying for Every Member” is sponsored by Prayer Ministry. By using this monthly newsletter insert, we will pray unceasingly for each other.

2/1	Brian & Cindy Dobberke
2/2	Molly Dobberke Riehle
2/3	Bonnie Dragert
2/4	Charlie & Jackie Druecke, Jake & MacKenzie
2/5	Matthew, Julie, Raegan, Kaitlyn, & Austin Fick
2/6	Linda, Casey, & Nicholas Filler
2/7	Donald & Marlene Fitzgerald
2/8	Joe & Shawn Fitzgerald
2/9	Kevin & Jeri Franz
2/10	Lance, Julie, Allyson, & Lainey Fredrick
2/11	Peter, Linda, & Kelly Gorman
2/12	Gary, Kate, Grace, & Jillian Graczyk
2/13	Robert Grant
2/14	Bill, Kathy, Matthew, Jessica, & Elizabeth Graser
2/15	Mark, Kari, Ashley, Nathan, & Riley Grossklaus
2/16	Michael, Sherryl, & Samantha Gruetzmacher
2/17	Bruce & Glenna Gunderson
2/18	Roy & Linda Hafemeister
2/19	Helene Hagenmayer
2/20	Lynda & Alexander Hardrath
2/21	Diane Hayek
2/22	David & Charlene Hein
2/23	Elizabeth Hinkelman
2/24	Dennis & Melissa Hodik
2/25	Maija & Matthew Hoh
2/26	Linda Holasek
2/27	Jeffrey, Kay, Megan, & William Horne
2/28	Kristen & Megan Horning

FEBRUARY BIRTHDAYS...

Linda Konichek	2/3
Hudson Kim	2/4
Lillian Rockteacher	2/4
Henry Kim	2/5
Alex Chiello	2/6
Chase DeLano	2/6
Charlie Druecke	2/7
Ellie Libeck	2/7
Alethea Sment	2/7
Amy Neidhold	2/8
Thomas Barnes	2/9
Brittany Carpenter	2/9
Dylan Troka	2/9
Jane Lese	2/10
Mark Janovetz	2/11
Linda Gorman	2/12
Aaron Jellish	2/12
Raegan Fick	2/14
Sandra Jay	2/15
Cameron Bergendahl	2/17
Jay Neidhold	2/19
Richard Struck	2/19
John Corey	2/20
Rose Roman	2/21
James Sidders III	2/21
Sylvia Bork	2/22
Carol Rolfe	2/22
Lukas Buettner	2/27
Mila Wright	2/27
Dawn Shuda	2/28
Kristen Horning	2/29

FEBRUARY ANNIVERSARIES...

Alethea & Steve Sment	2/3
Rick & Kristin Carey	2/12
Robert & Lynn Brueggeman	2/19
Lisa & Trent Smith	2/24

COUNCIL CORNER		
Council Member	Phone Number	Email Address
President Cindy Dobberke		cindy.dobberke@mountolive-elca.com
Vice President Debi Struck		
Secretary Linda Burie		
Treasurer Dennis Martin/Finance/Stewardship		
Inge Adams		
Matt Fick		
Cheryl Shanovich		
Duane Thornton		
Mike Zaddack		
Rev. Dr. Sandy Chrostowski		pastorsandy@mountolive-elca.net

Adopted Council minutes are posted on the Council bulletin board for your review. Please feel free to contact any Council member listed above with any new ideas or caring concerns regarding Mount Olive. Please remember all our Council Members in your prayers.

GET CONNECTED			
ACTS Team	Betty Arntson Marc Roehl		
Administrative Assistant	Debbie Wagner	262-363-8251	mto@mountolive-elca.net
Adult Forum (Sunday mornings)	Laura Conry		
Altar Guild	Eva Schindhelm		
AMMPARO	Karen Sperstad		
Gather Bible Study (monthly)	Cindy Dobberke	262-719-5711	cindy.dobberke@mountolive-elca.com
Bookkeeper	Doug Bue		finances@mountolive-elca.net
Coffee Fellowship	Debbie Wagner	262-363-8251	mto@mountolive-elca.net
AoB Coordinator	Cindy Dobberke	262-719-5711	cindy.dobberke@mountolive-elca.com
Custodial	Debbie Wagner	262-363-8251	mto@mountolive-elca.net
Don't Munch Alone Bunch (DMAB)	Glenna Gunderson		
Financial Secretary	Debbie Wagner	262-363-8251	mto@mountolive-elca.net
Grief Support Group	Betty Hinkelman		
Health & Wellness	Pat Vandehey		
Knotty Knitters	Betty Hinkelman Inge Adams		
Ladies Book Club	Diane Dickey		
Loaves & Fishes	Cindy Dobberke	262-719-5711	cindy.dobberke@mountolive-elca.com
Memorials	Angela Porter		
Mt. Menu Coffee	Debbie Wagner	262-363-8251	mto@mountolive-elca.net
Praise Team Director	Deanna Kulow		deanna.kulow@mountolive-elca.net
Prayer Chain	Betty Hinkelman		
Service	Jean Cruikshank		
Sunday School Coordinator	Cindy Dobberke	262-719-5711	cindy.dobberke@mountolive-elca.com
Thrivent Financial for Lutherans Congregational Advocate	Cindy Dobberke	262-719-5711	cindy.dobberke@mountolive-elca.com
Wednesday Night Bible Study	Dwight Cruikshank		

THIS WEEK AT MTO

Did you know that a weekly email is sent out each Wednesday entitled "This Week at MTO." Each weekly email contains the following types of info: special messages, Mount Olive's calendar for the coming week, and any other events that are happening at Mount Olive over the next week or so. If you are not currently receiving this email, please let the church office know your email address, and we will add you to the circulation list. Or sign up on our website at: www.mountolive-elca.net. Don't miss out! **PLEASE LET US KNOW...** If you, a family member, or a friend would like to have a visit from the pastor, please notify the church office or Cindy Dobberke. We rely on you to keep us informed so that our ministry with you can continue: 262.363.8251 or mto@mountolive-elca.net.

FEBRUARY 2023

<i>Sun</i>	<i>Mon</i>	<i>Tue</i>	<i>Wed</i>	<i>Thu</i>	<i>Fri</i>	<i>Sat</i>
			1 9am Weekly Text Study 6:30pm Wednesday Night Bible Study	2	3 10am Knotty Knitters 11am Lectio Divina Via Zoom	4
5 8am Worship & HC 9am Adult Bible Study 9:45am SS Gathering Time 10am Worship & HC 11am HS 2023 Accompaniment Meeting 7:30pm Alanon*	6 11am Lectio Divina 6pm Service Team	7 6:30pm AoB	8 9am Weekly Text Study 6:30pm Wednesday Night Bible Study	9 9:30am MCC Food Pantry*	10 10am Knotty Knitters 11am Lectio Divina Via Zoom	11 8am – 12noon Just One More Ministry Food Sort OR February 25th
12 8am Worship & HC 9am Adult Bible Study 9:45am SS Gathering Time 10am Worship & HC 7:30pm Alanon*	13 11am Centering Prayer 6:30pm Church Council	14 9:30am Gather Small Group Bible Study	15 9am Weekly Text Study 11:30am DMAB Lunch @ Chen's Kitchen 2pm Ladies Book Club 6:30pm Wednesday Night Bible Study	16 12:30pm Grief Support Group	17 10am Knotty Knitters 11am Lectio Divina Via Zoom	18 3-5pm 4 th & 5 th Grade Retreat
19 8am Worship & HC 9am Adult Bible Study 9:45am SS Gathering Time 10am Worship & HC 7:30pm Alanon*	20 11am Lectio Divina	21	22 Ash Wednesday 9am Weekly Text Study 7pm Ash Wednesday Worship Service	23 9:30am MCC Food Pantry*	24 10am Knotty Knitters 11am Lectio Divina Via Zoom	25 8am – 12noon Just One More Ministry Food Sort
26 8am Worship & HC 9am Adult Bible Study 9:45am SS Gathering Time 10am Worship & HC 7:30pm Alanon*	27 11am Centering Prayer 6:30pm Grief Support Group	28				

MOUNT OLIVE EVANGELICAL LUTHERAN CHURCH
211 Main Street, Mukwonago WI 53149-1525

Telephone: (262) 363-8251
www.mountolive-elca.net

Email: mto@mountolive-elca.net